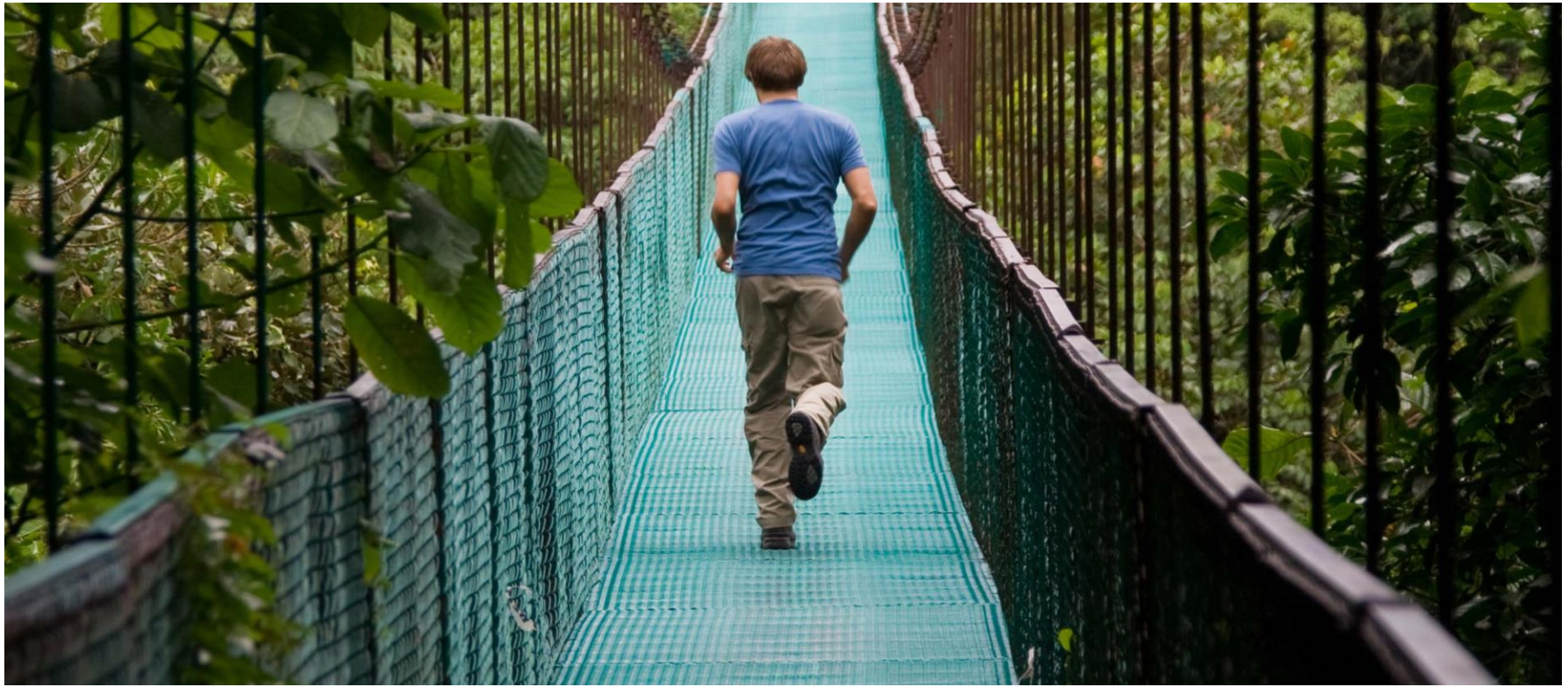


WELCOME



ALCATEL-LUCENT QualiWare EA IMPLEMENTATION

Margaret Maciejczak and Roger Carlson

February 10, 2015

PRESENTERS BACKGROUND

Margaret Maciejczak



Enterprise Architect & Manager

Within ALU EA team responsible for transformation programs in various aspects related to design of the architecture of the applications and their technical integration. Previously responsible for Information Systems Cross Domains Applications Development including Identity Access Management, Applications Integration and Master Data Management. Earlier managed SAP ECC Supply Chain applications and SAP IT Projects.

Prior to joining Alcatel-Lucent worked 8 years with "Deloitte "as the SAP Consultant and PM.

In Business Supply Chain worked as Materials Manager.

Roger Carlson



Enterprise Architect

34+ years experience in various IS/IT roles: Enterprise Architecture, Information Architecture, System Engineering, Client Partner Support, Solution Architecture, Business Analyst, and Business Process Modeling

Additionally, have experience in the engineering and implementation of Enterprise Architecture and Business Process Modeling solutions

Currently, the Alcatel-Lucent QualiWare application administrator leading the efforts to enhance our QualiWare implementation to meet company directives

AGENDA

1. Alcatel-Lucent Background
2. Enterprise Architecture - Why We Needed
3. Enterprise Architecture Definition
4. Software Selection
5. Alcatel-Lucent Enterprise Architecture Solution - CARMA
6. Alcatel-Lucent CARMA Installation and Highlights
7. Q & A

ALCATEL-LUCENT BACKGROUND (1/4)

ABOUT US



Alcatel-Lucent is the leading IP networking, ultra-broadband access and cloud technology specialist. We are dedicated to making global communications more innovative, sustainable and accessible for people, businesses and governments worldwide. Our mission is to invent and deliver trusted networks to help our customers unleash their value.

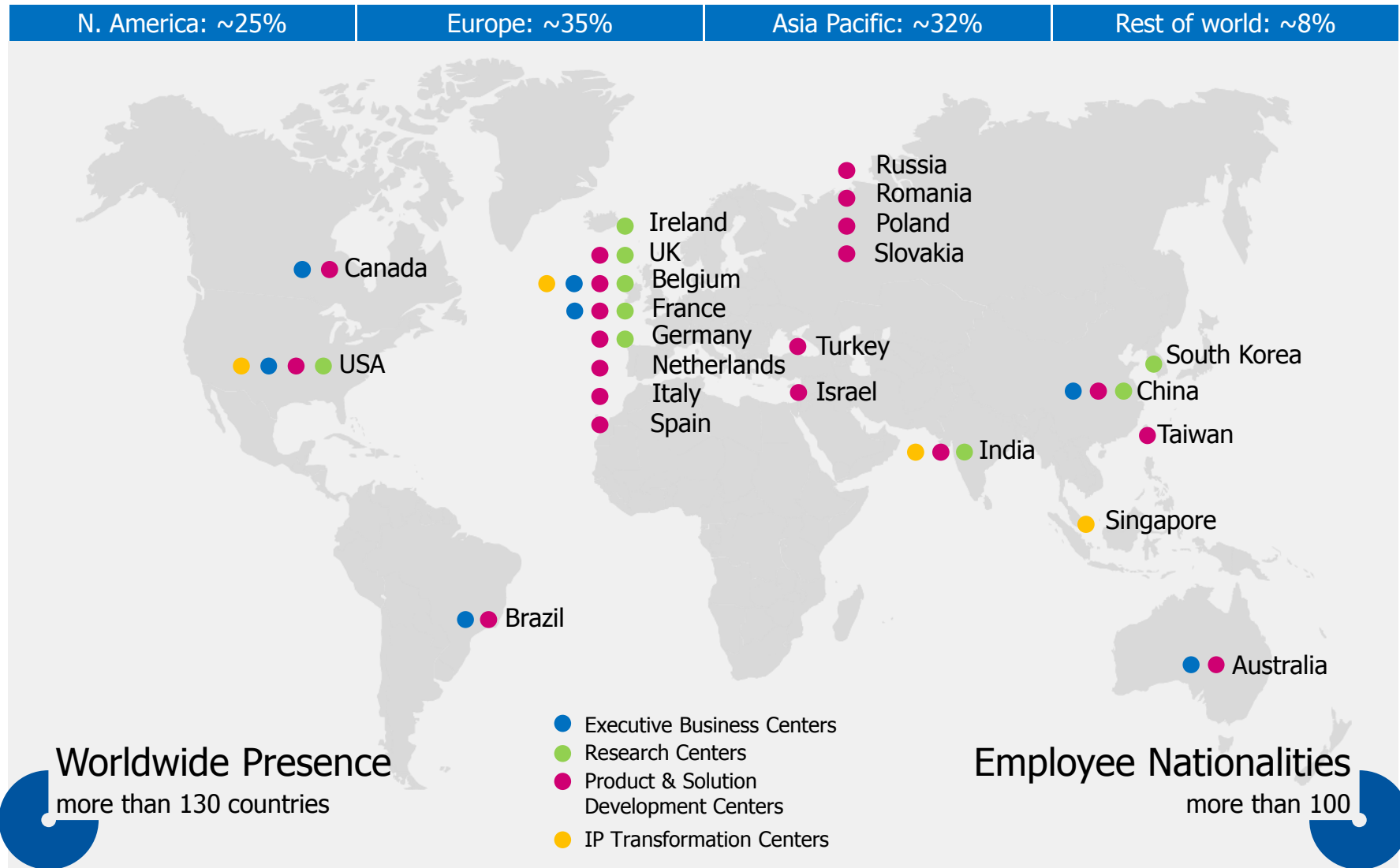
Every success has its network.

FAST FACTS

- Headquarters: Paris, France
- Annual Revenues: approx. €14.4 billion
- Employees: 62,000 +
- 130 countries
- R&D Budget: €2.3 billion
- Active Patents Held: 32,000
- 12 researchers awarded Nobel Prizes in Physics

ALCATEL-LUCENT BACKGROUND (2/4)

GLOBAL REACH - Employees by area



ALCATEL-LUCENT BACKGROUND (3/4)

LEADERSHIP TEAM



Michel Combes
Chief Executive
Officer

BUSINESS LINES



Basil Alwan
IP Routing and
Transport



Dave Geary
Wireless



Bhaskar Gorti
IP Platforms



Federico Guillén
Fixed Networks

ALCATEL-LUCENT BACKGROUND (4/4)

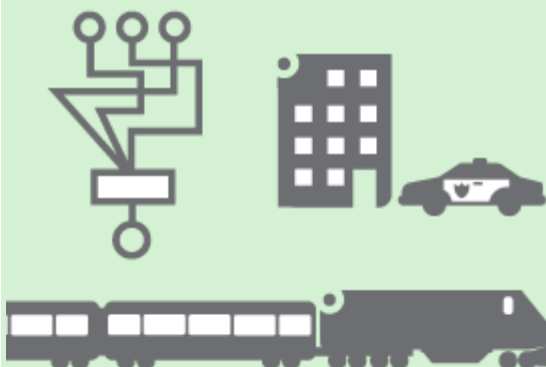
CUSTOMERS WE SERVE

SERVICE PROVIDERS



A leader in mobile, fixed, IP and optics technologies, and a pioneer in applications and services, we offer complete solutions that help service providers and their customers realize the potential of a connected world.

STRATEGIC INDUSTRIES



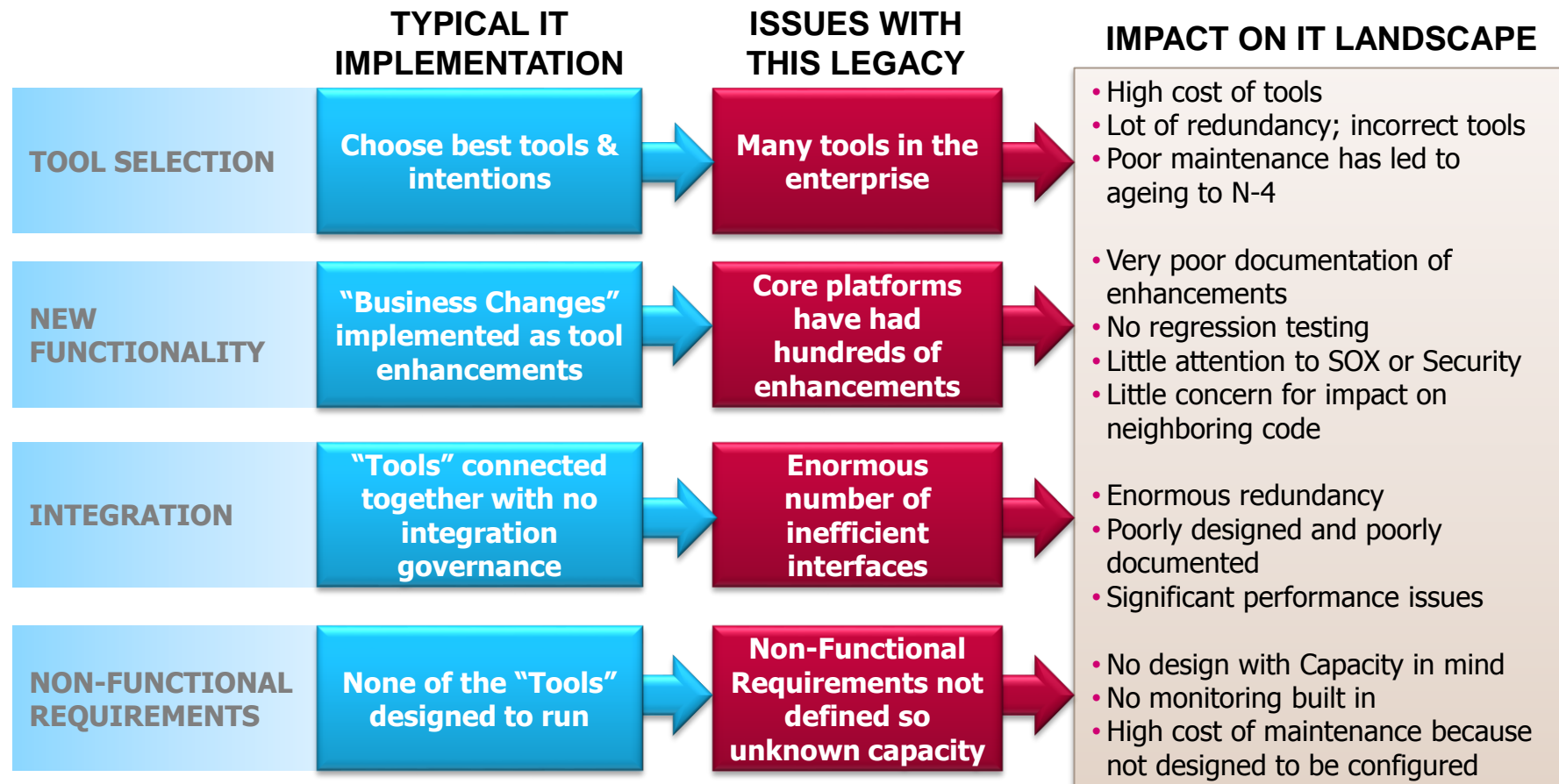
We provide end-to-end turnkey communications integration that improve quality of life through better energy management, efficient transportation and improved government services.

ENTERPRISES



We help our enterprise and government customers worldwide interconnect their networks, people, processes and knowledge to make money and save money.

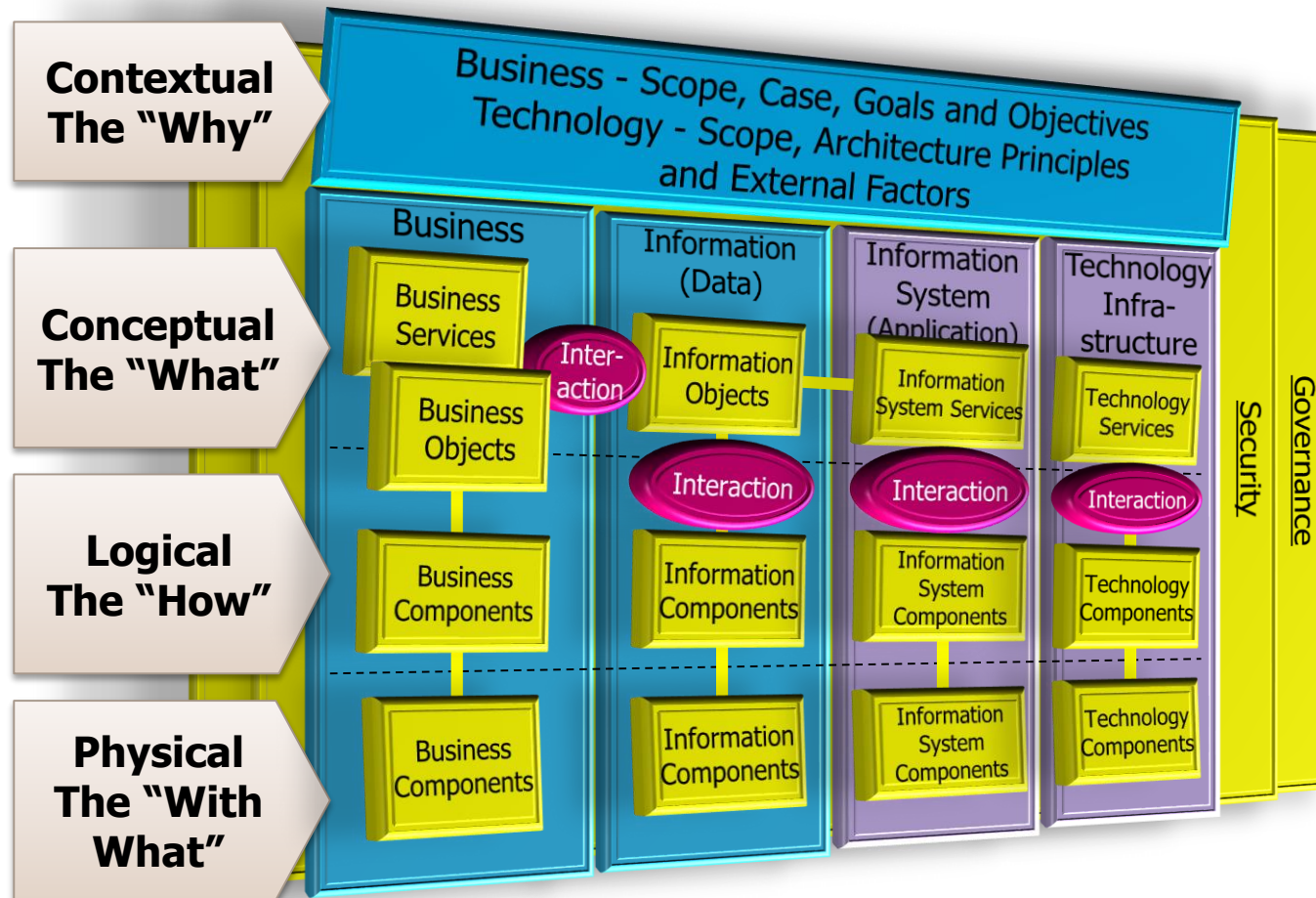
ENTERPRISE ARCHITECTURE - WHY WE NEEDED YEARS OF IMPLEMENTATION WITHOUT ARCHITECTURE



Business Transformations for FINANCE, SALES, HR, SUPPLY CHAIN and ERP driven from new programs require enormous architecture changes on the existing systems

ENTERPRISE ARCHITECTURE DEFINITION (1/4)

METHODOLOGY



What we did

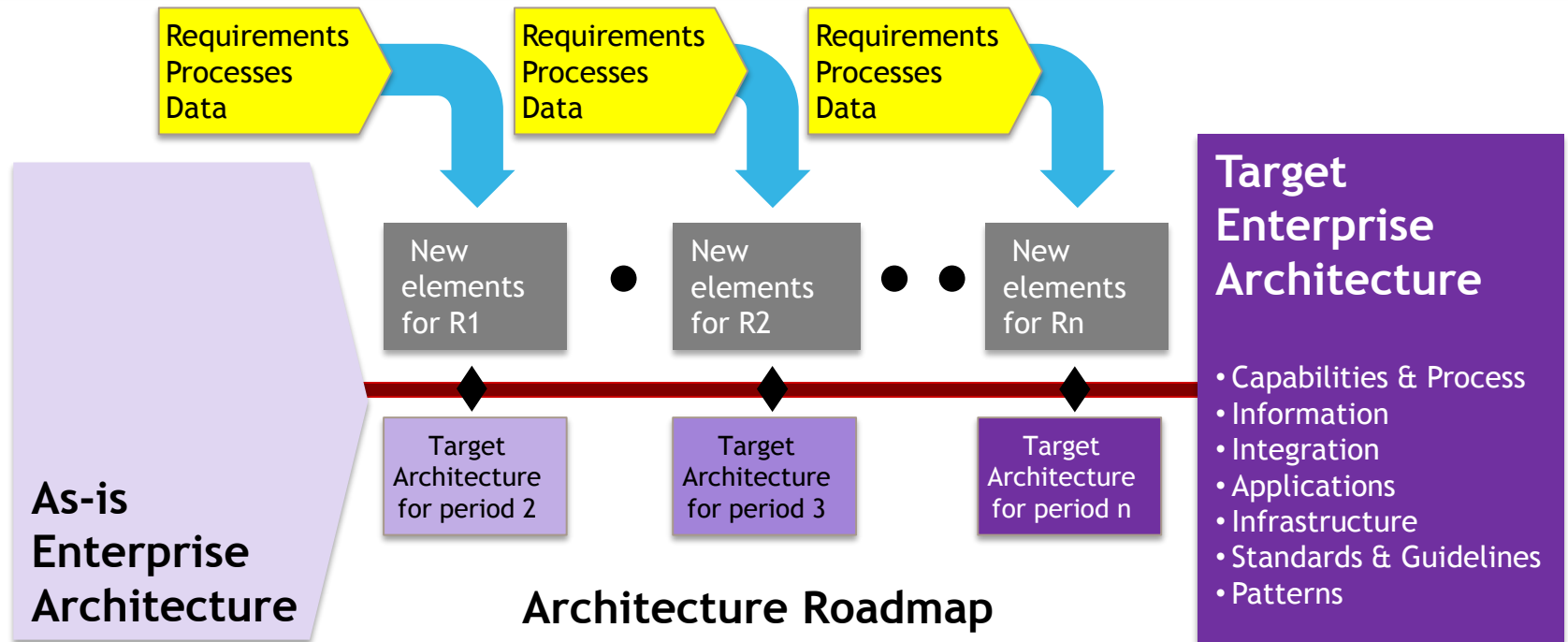
- Used Integrated Architecture Framework (IAF) from Cap Gemini
- Scope of EA definition driven business & IT priorities
- Used IT Principles to justify choices & bring traceability

Approach is flexible, scalable, adaptable that can be applied to all levels of architecture (enterprise & solution), Infrastructure, Software, or packaged.

ENTERPRISE ARCHITECTURE DEFINITION (2/4)

PROJECTS IMPLEMENT TARGET EA

Each project solution implementation is a step towards realizing the Target Enterprise Architecture.



Architecture Roadmaps normally derived from business needs, best paths to the Target Enterprise Architecture and migration considerations from AS-IS.

ENTERPRISE ARCHITECTURE DEFINITION (3/4)

CONTENT DESCRIPTION

Principles

- A principle reflects a fundamental or general truth that helps people determine the appropriate behavior given the circumstance at hand. It provides the intent of what to do, but not how to do it.
- **USAGE:** Followed to guide solution architecture design.

Assets used in solution architecture

- Assets defined driven from Business & IS&IT priorities.
- **USAGE:** These assets are required to be re-used in the solution architecture design.

Policy, Standards, Guidelines

- **Guidelines:** Guidelines are documents that go into the details of a required or established practice with the aim of simplifying and clarifying how it is applied. Following guidelines implies a positive impact on the context.
- **Standards:** Standards are something set up and established by authority as a rule for the measure of quantity, weight, extent, value, or quality.
- **USAGE:** Followed to guide solution architecture design.

Patterns

- Patterns are the regular and repeated way in which something happens or is done.
- **USAGE:** The patterns are used to select the appropriate asset for the solution architecture design.

ENTERPRISE ARCHITECTURE DEFINITION (4/4)

CONTENT USED IN SOLUTION ARCHITECTURE DESIGN

Area	Assets used in Solution Architecture	Standards, Guidelines, Patterns
Overall	IT Principles	<ul style="list-style-type: none"> Guidelines: IT Principles
Business (B)	<ul style="list-style-type: none"> Business Capabilities Business Processes, Business Objects, Business Roles, Activities 	<ul style="list-style-type: none"> Guidelines: Business Process Modeling
Information (I)	<ul style="list-style-type: none"> Information Objects Information Attributes 	<ul style="list-style-type: none"> Guidelines: Information Architecture
Information Systems (IS)	<ul style="list-style-type: none"> IS Services Physical IS Components (PISC) PISC Collaboration Contracts (PISCCC) Integration Catalog 	<ul style="list-style-type: none"> Standards: Web Content Mgmt Guidelines: <ul style="list-style-type: none"> -Integration -Knowledge Mgmt -Identity Access Mgmt -PISC Patterns: <ul style="list-style-type: none"> -Integration Pattern Library -Integration Pattern Lookup Site -Business Intelligence Patterns -Knowledge Mgmt Patterns
Technology Infrastructure (TI)	<ul style="list-style-type: none"> TI Services Physical TI Components (PTIC) 	<ul style="list-style-type: none"> Standards: TI

SOFTWARE SELECTION

WHAT WE WERE LOOKING FOR

A SINGLE TOOL
TO SUPPORT ...

ALL PHASES OF
ARCHITECTURE DESIGN
(*with graphical
representations of the
design*)

AN ENTERPRISE VIEW
OF THE BUSINESS
PROCESSES AND
ARCHITECTURE

A LIBRARY OF
REUSABLE ASSETS

GOVERNANCE OF
ARCHITECTURE ASSETS



- Models **integrate** with the logical, physical designs.
- Ability to **drill down** from process model, down to the physical architecture (ex. application) that supports it and vice versa.
- **Reusable asset library** so projects don't create duplicate interfaces, reports, etc.
- Building a **picture of the entire Business & IT landscape** in one place.
- Supports **What-if impact analysis** (what if I replace a current 3rd party application - what business functions does it support, what does it interface with, what information does it provide).



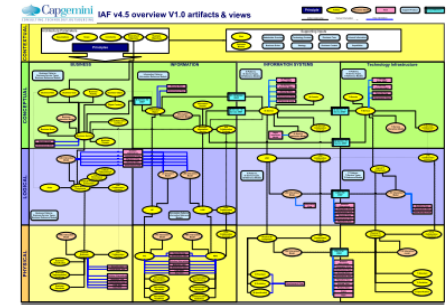
qualiware[®]

ALCATEL-LUCENT ENTERPRISE ARCHITECTURE SOLUTION CARMA

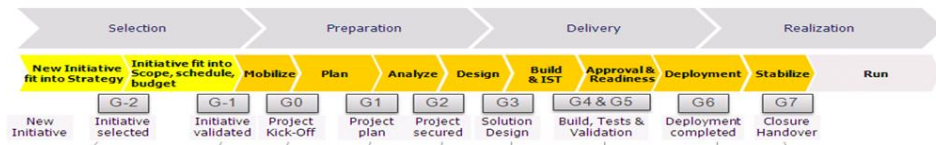
Common
Architecture
Repository and
Management
Application

qualiware

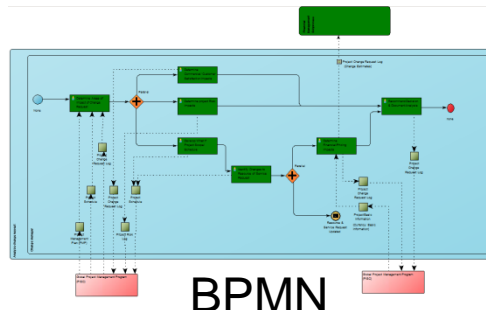
Tool and Meta-Model
Foundation



Integrated Architecture
Framework



Project Driven



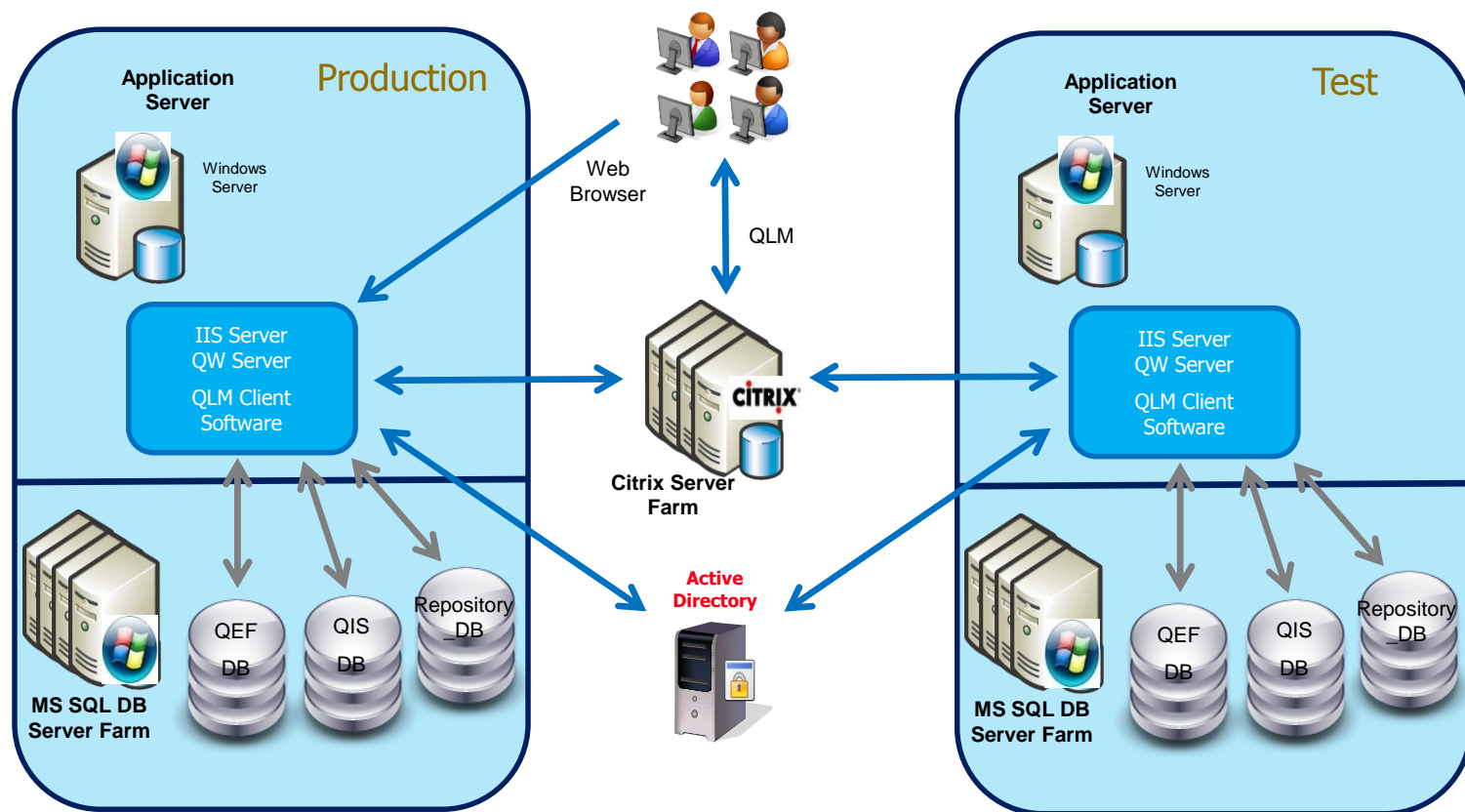
BPMN



Hosted Platform

ALCATEL-LUCENT CARMA (1/13)

HARDWARE STRUCTURE

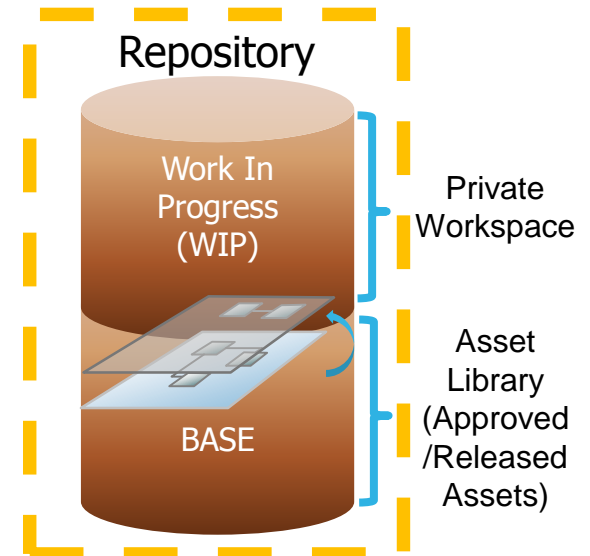


ALCATEL-LUCENT CARMA (2/13)

REPOSITORY DEFINITIONS AND USE

- Key Principles:
 - Reduce complexity
 - Maximize reuse
 - Parallel architecture definition going on at same time with tight linkages between them

CARMA		
Repository	Definition	Use
Alcatel-Lucent	<ul style="list-style-type: none"> • Base Configuration • WIP (private workspace) 	<ul style="list-style-type: none"> • Production EA/BPM Repository
CARMA - Sandbox	<ul style="list-style-type: none"> • Base Configuration • WIP (private workspace) 	<ul style="list-style-type: none"> • Used for "test" loading data and for new users to get familiar with CARMA • Periodically refreshed with production repository data
CARMA - Test	<ul style="list-style-type: none"> • Base Configuration • WIP (private workspace) 	<ul style="list-style-type: none"> • Repository used to test new releases of CARMA. • Limited user access. • On start-up runs test configuration setup (controlled through Repository Administrator) • Periodically refreshed with production repository data



ALCATEL-LUCENT CARMA (3/13)

ACCESS AND OVERVIEW

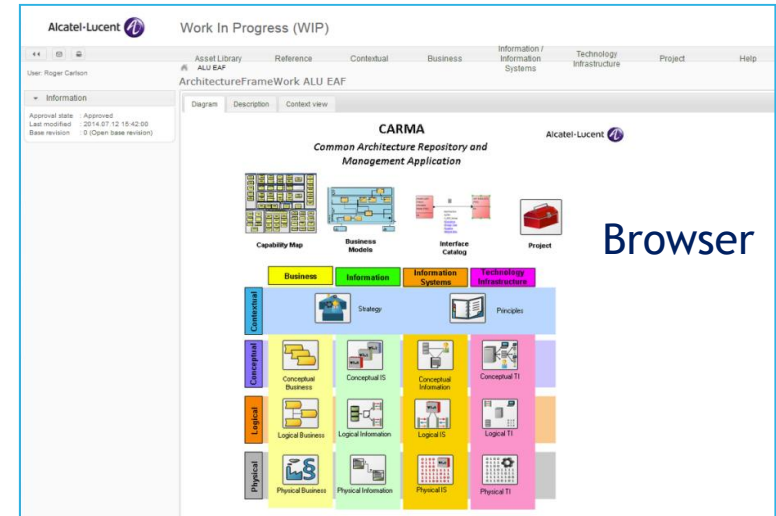
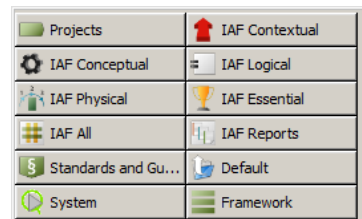
Access

- QualiWare Lifecycle Manager (QLM)
 - All design and change management done using QLM
 - Limited to Enterprise Architects
- Web Browser
 - Read-only access to all people within Alcatel-Lucent

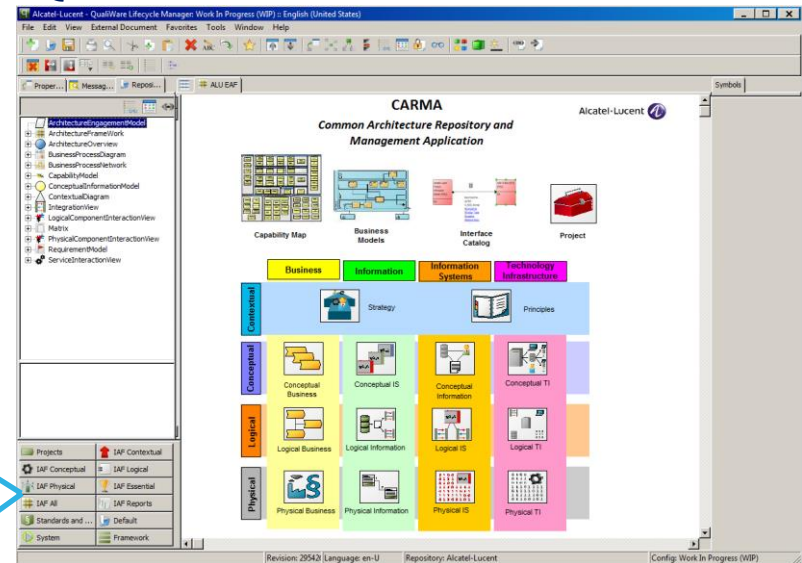
Overview Page

- Provides easy access to key aspect areas/information within CARMA
 - Models, Projects, Conceptual, Logical, Physical

IAF Quick Access Buttons



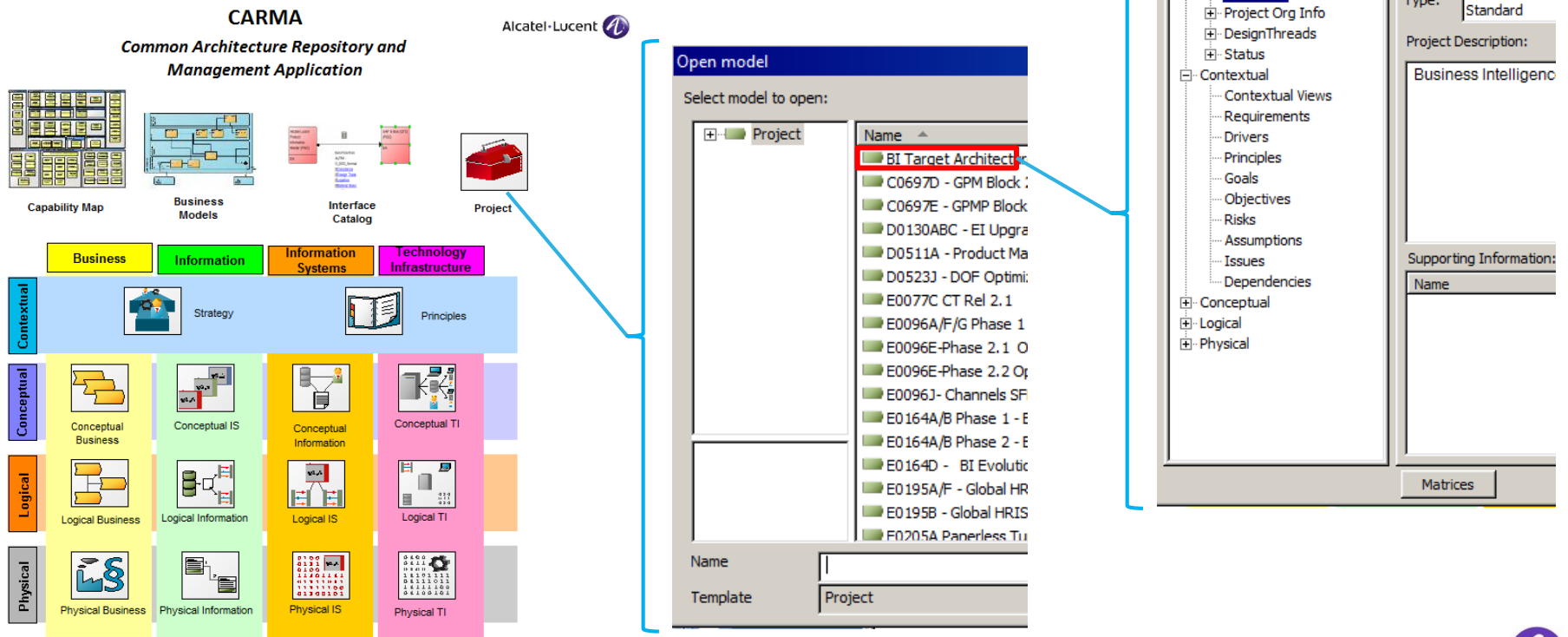
QLM



ALCATEL-LUCENT CARMA (4/13)

PROJECT

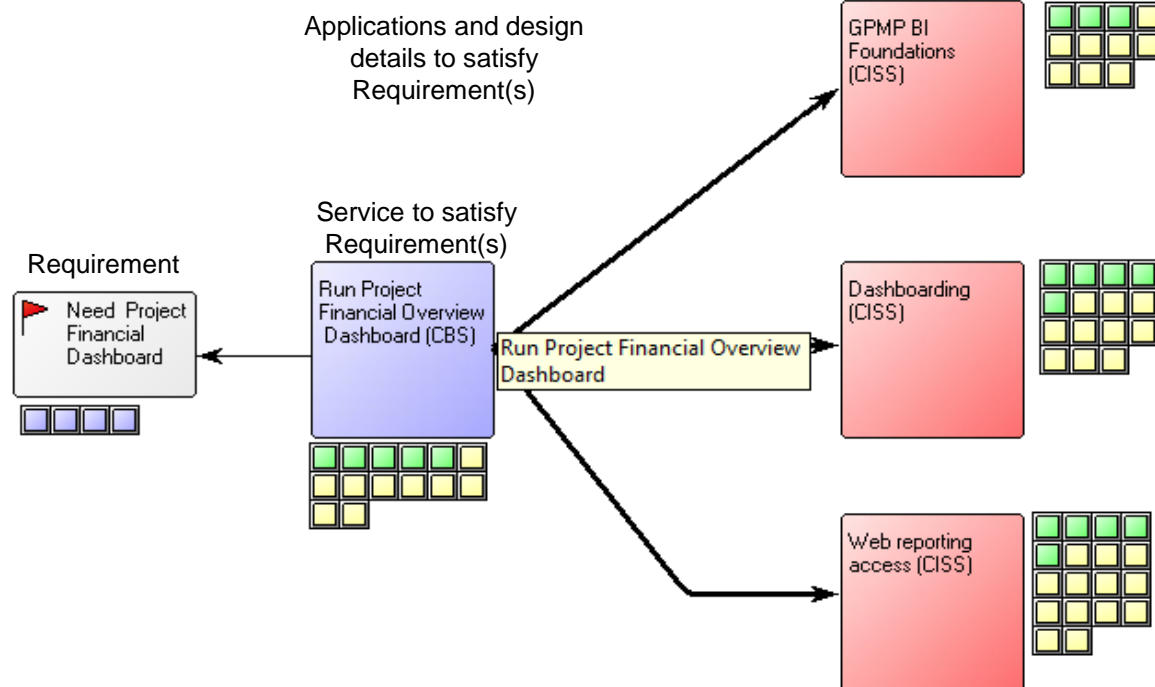
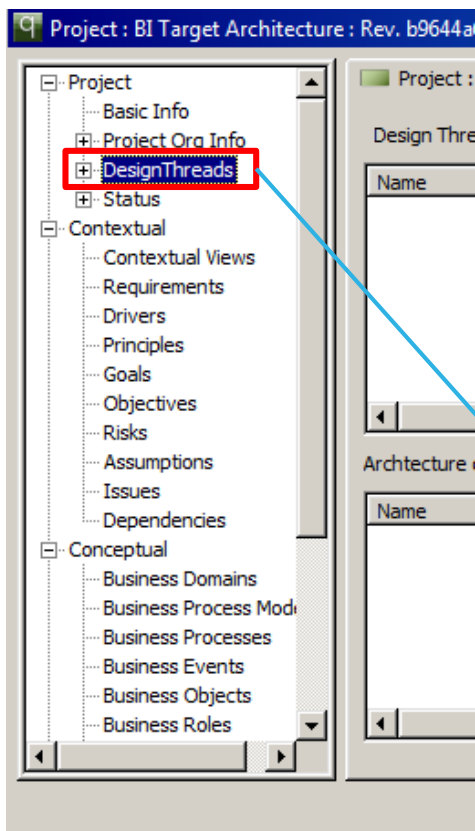
- Project object used to detail the architecture design with links to the various reusable architecture assets
- Project non-functional requirements managed on linkage between project and architecture assets



ALCATEL-LUCENT CARMA (5/13)

PROJECT - DESIGN THREADS

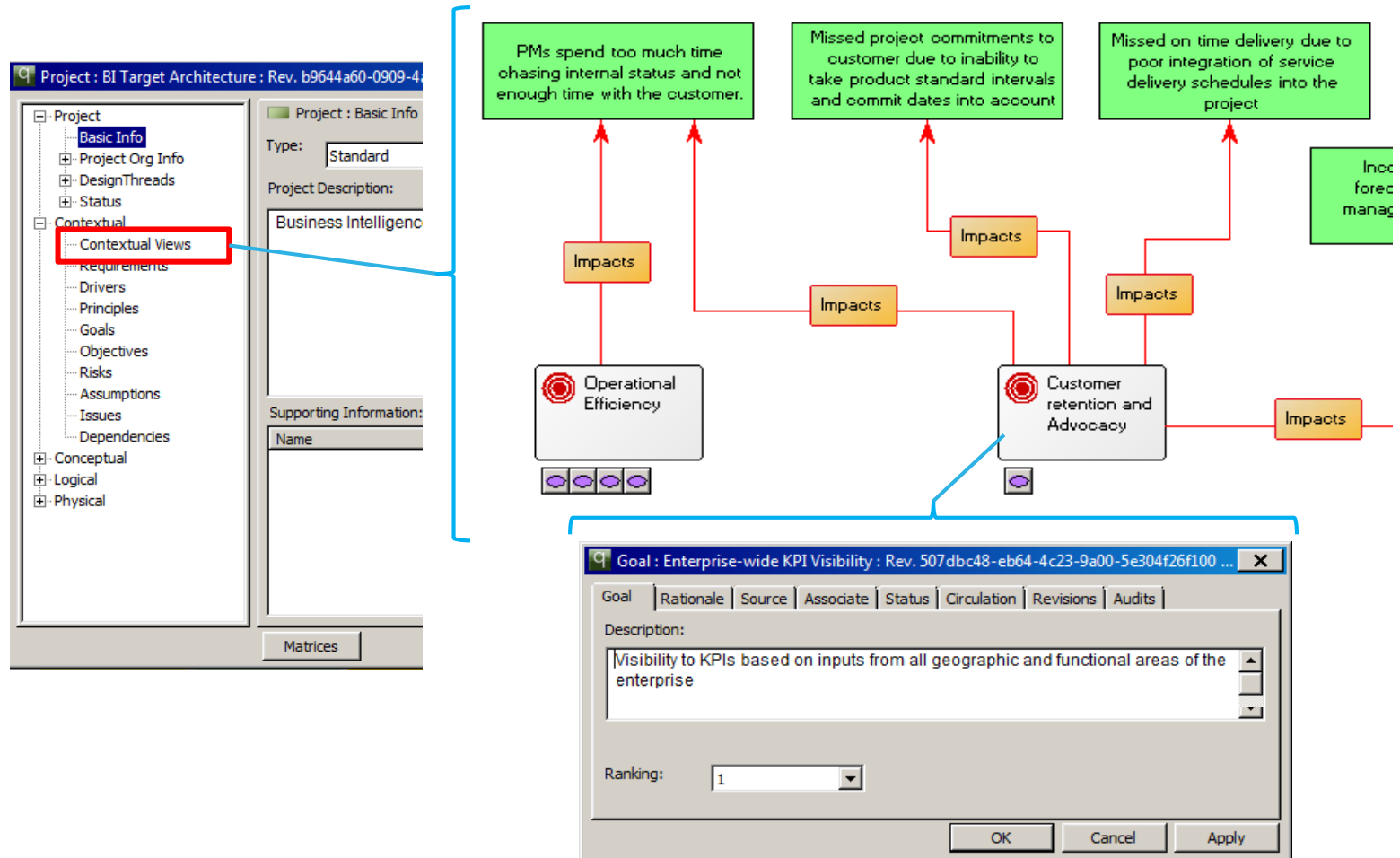
Traceability



ALCATEL-LUCENT CARMA (6/13)

PROJECT - CONTEXTUAL

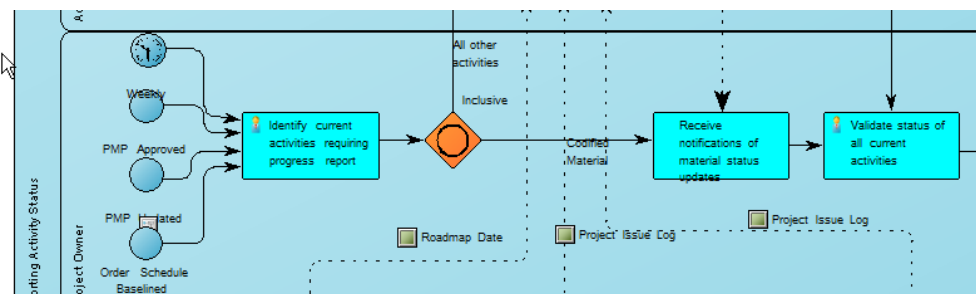
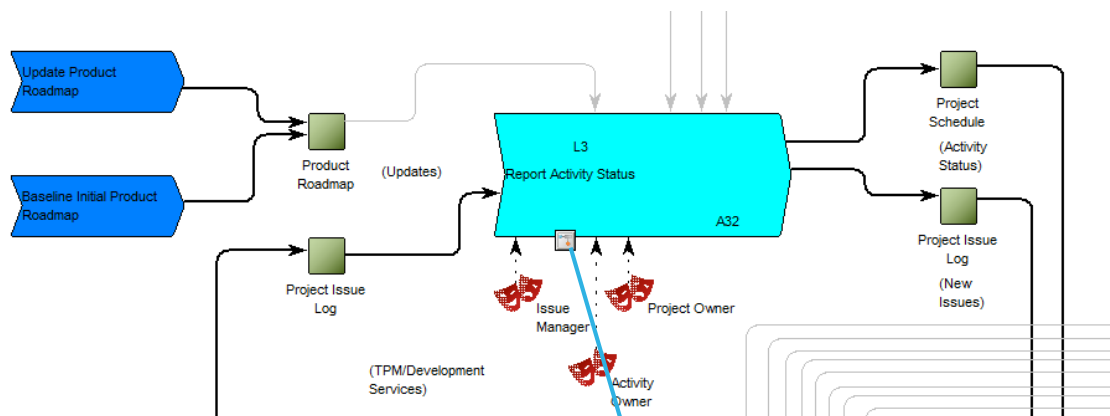
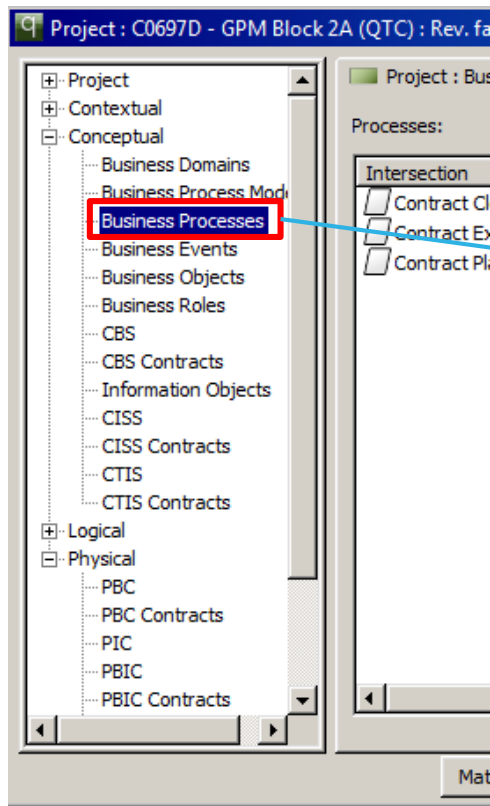
Visual Contextual Relationships



ALCATEL-LUCENT CARMA (7/13)

PROJECT - CONCEPTUAL

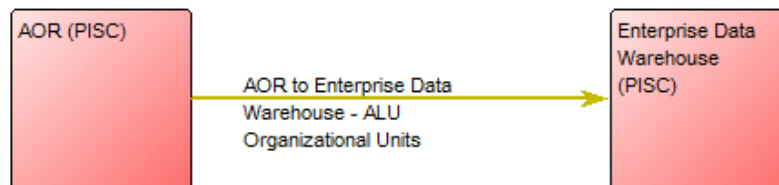
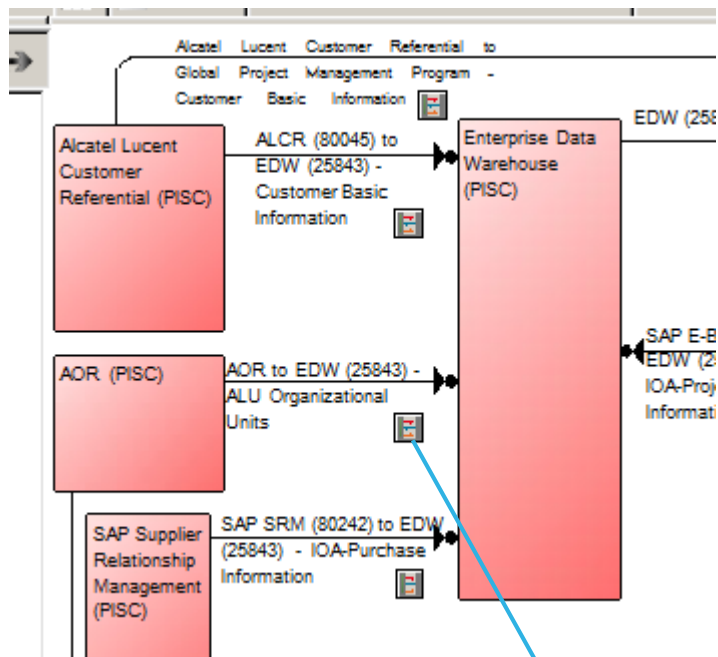
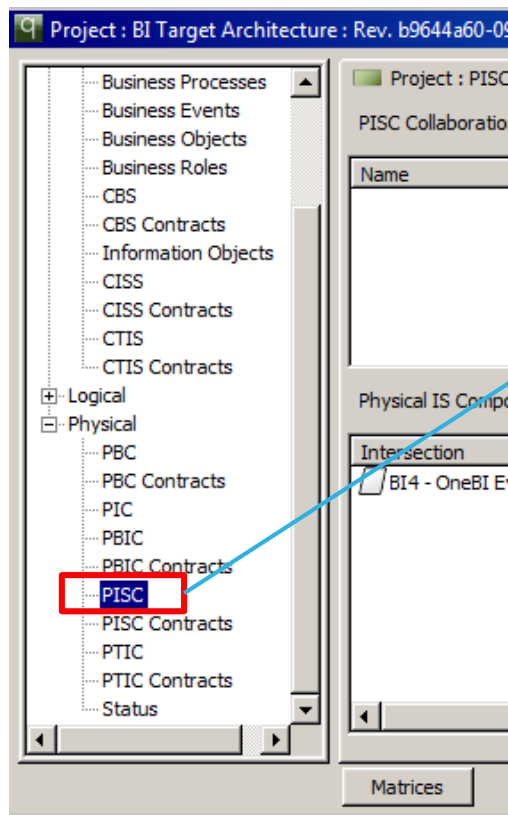
Business Process Models



ALCATEL-LUCENT CARMA (8/13)

PROJECT - PHYSICAL

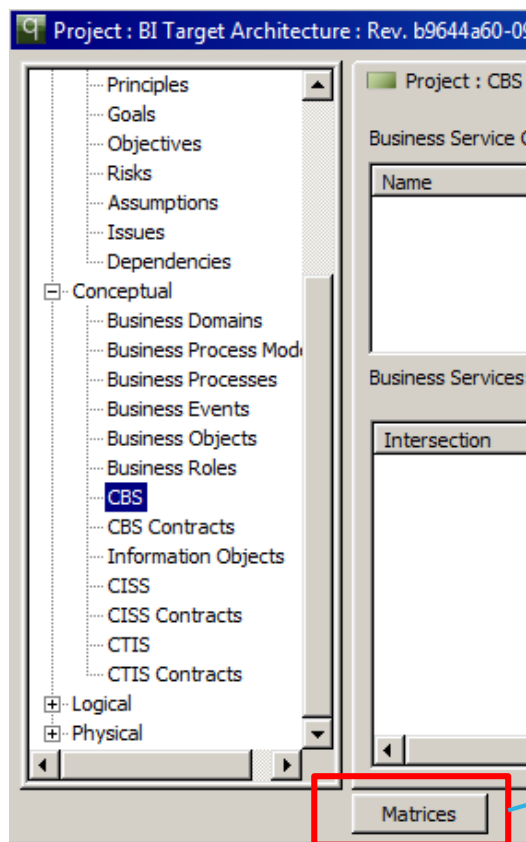
Integration Models



ALCATEL-LUCENT CARMA (9/13)

PROJECT - MATRICES

Relationship matrices easily accessible within Project

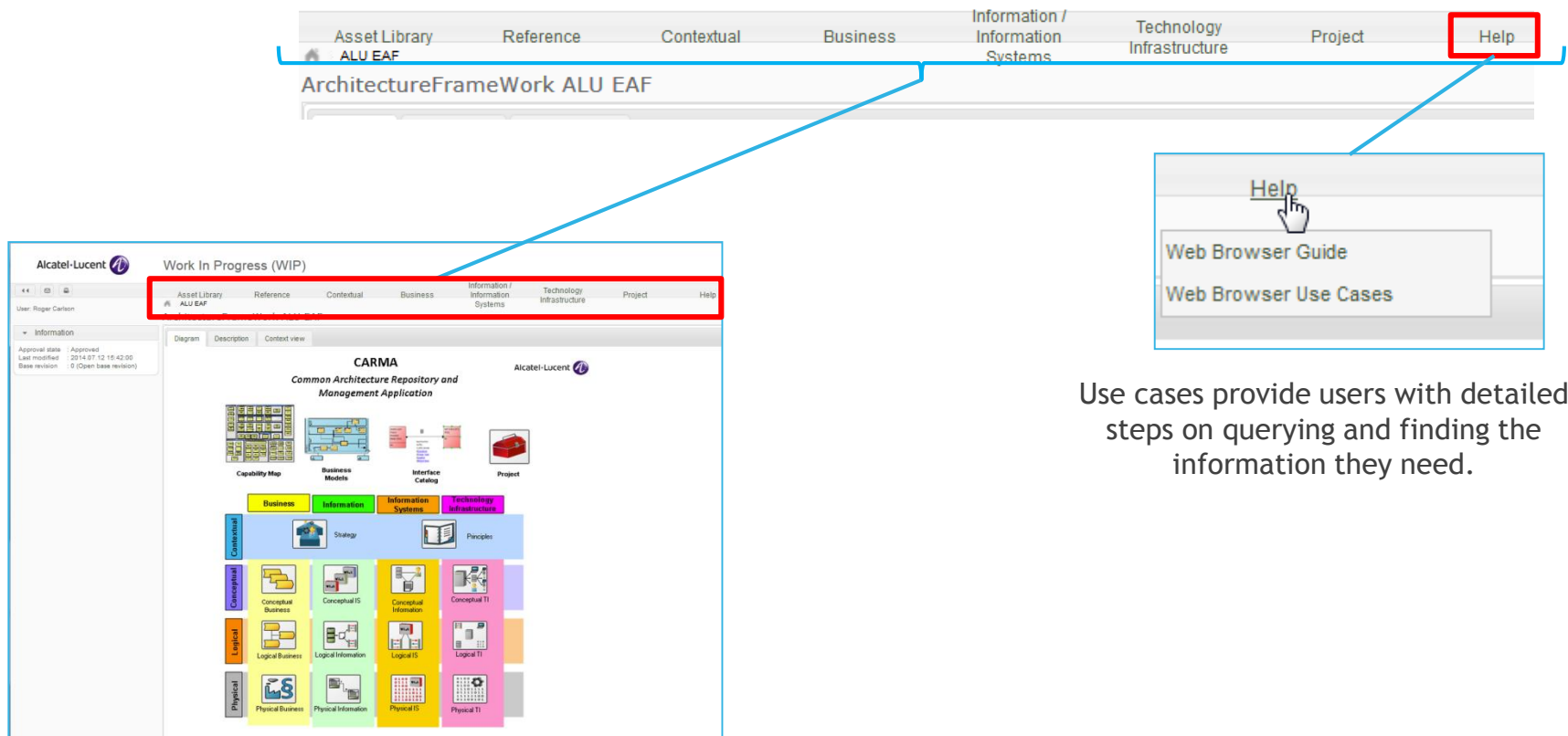


Conceptual - B: CBS X BO	Balance of Deferred Revenue and Costs (SNIPS)	Client Engagement Book	Customer	Customer Acceptance Document
GPM - Maintain project portfolio			Uses	
GPM - Manage Client Engagement Book		Uses	Uses	Uses
GPM - Manage Program				
GPM - Manage Project Basic Information			Uses	
GPM - Manage Project Change Requests		Uses		
GPM - Manage Project Charter			Uses	

ALCATEL-LUCENT CARMA (10/13)

WEB BROWSER

Menu structured by major aspect areas

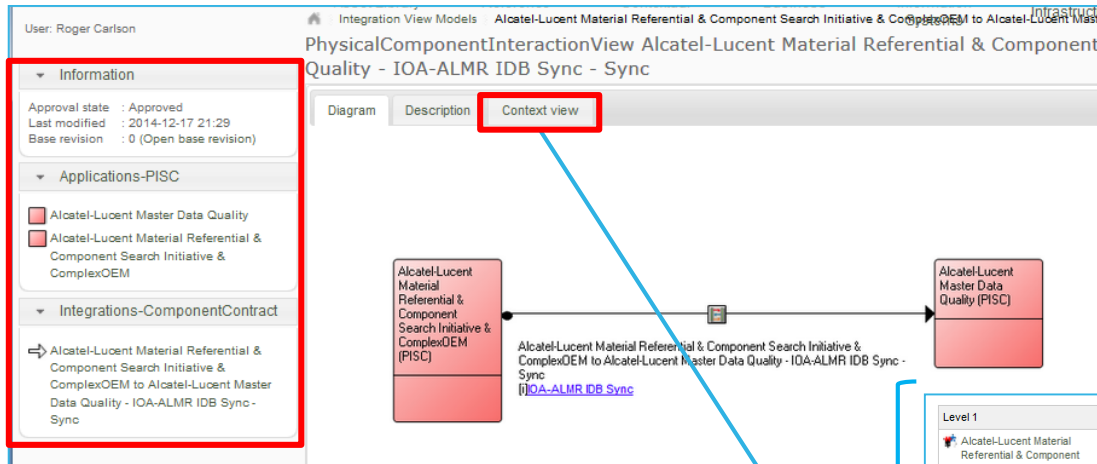


Use cases provide users with detailed steps on querying and finding the information they need.

ALCATEL-LUCENT CARMA (11/13)

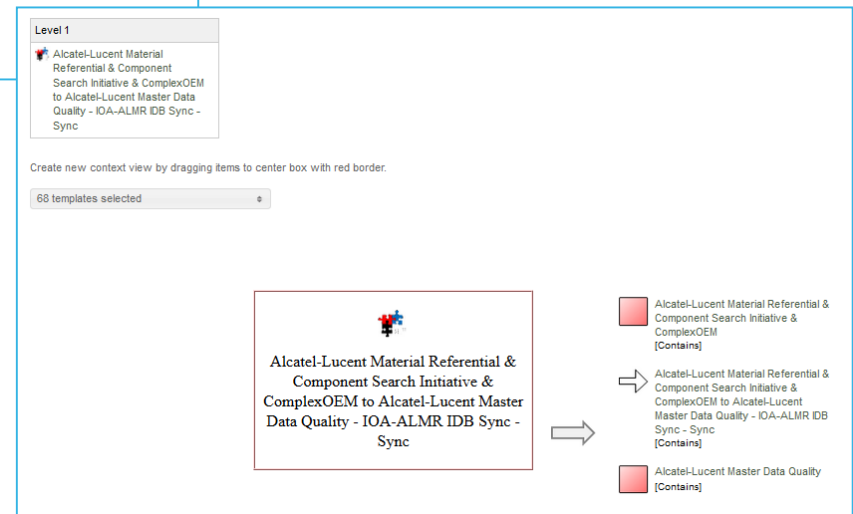
WEB BROWSER

Viewing models and analyzing



Left pane shows objects on model for quick selection and review

Context view is used to do analysis of a specific object (e.g. Application)



ALCATEL-LUCENT CARMA (12/13)

WHERE WE ARE NOW

- Over the past year Alcatel-Lucent has gone through a significant change in the way the process and methodology of who and how the Business process and IS/IT landscape is defined and implemented. These changes lead to:
 - Evolving our “ways of working” to accommodate our partners’ design methodologies
 - Re-examination and re-definition of the architecture deliverables which required meta-model changes
- CARMA Web Browser is used by business and solution architects to view and identify reusable architecture assets
 - Menu structure organized to accommodate ease of use
 - On-line help with use cases describing how to get to various levels of the information
- We are in the early phases of capturing KPI’s related to Enterprise Architecture and design (re-use, number of assets, quality)

ALCATEL-LUCENT CARMA (13/13)

FUTURE PLANS

- Evolve our Web Browser experience
 - Allow simple editing and change management of object information
 - Enhance current query/search capabilities
- Enhance meta-model and functionality to support:
 - Key Performance Indicators initiative
 - Software as a Service (SaaS) and Everything as a Service (EaaS)
 - Change management (workflow implementation)
- Re-evaluate current EA requirements and design methodology looking for opportunities to leverage more out of the box (OOTB) core meta-model and functionality
- Understand and evaluate QualiWare version 6 capabilities looking at potential impact and migration



Q & A

www.alcatel-lucent.com