

# **Modules Installation and Updating - QIS, RA, Web Forms**

# 1 Contents

1	Preface.....	2
2	Prerequisites.....	2
3	Module Description.....	2
4	Installing and Updating QIS, RA and Web Forms Modules .....	2

# 1 Preface

This document describes the steps necessary to install or update **QualiWare Integration Server** (hereinafter QIS), **Repository Administrator** (hereinafter RA) and **Web Forms** modules.

## 2 Prerequisites

QEF is installed and running.

## 3 Module Description

QIS, RA and Web Forms are the main modules that provide access and control of objects and repositories.

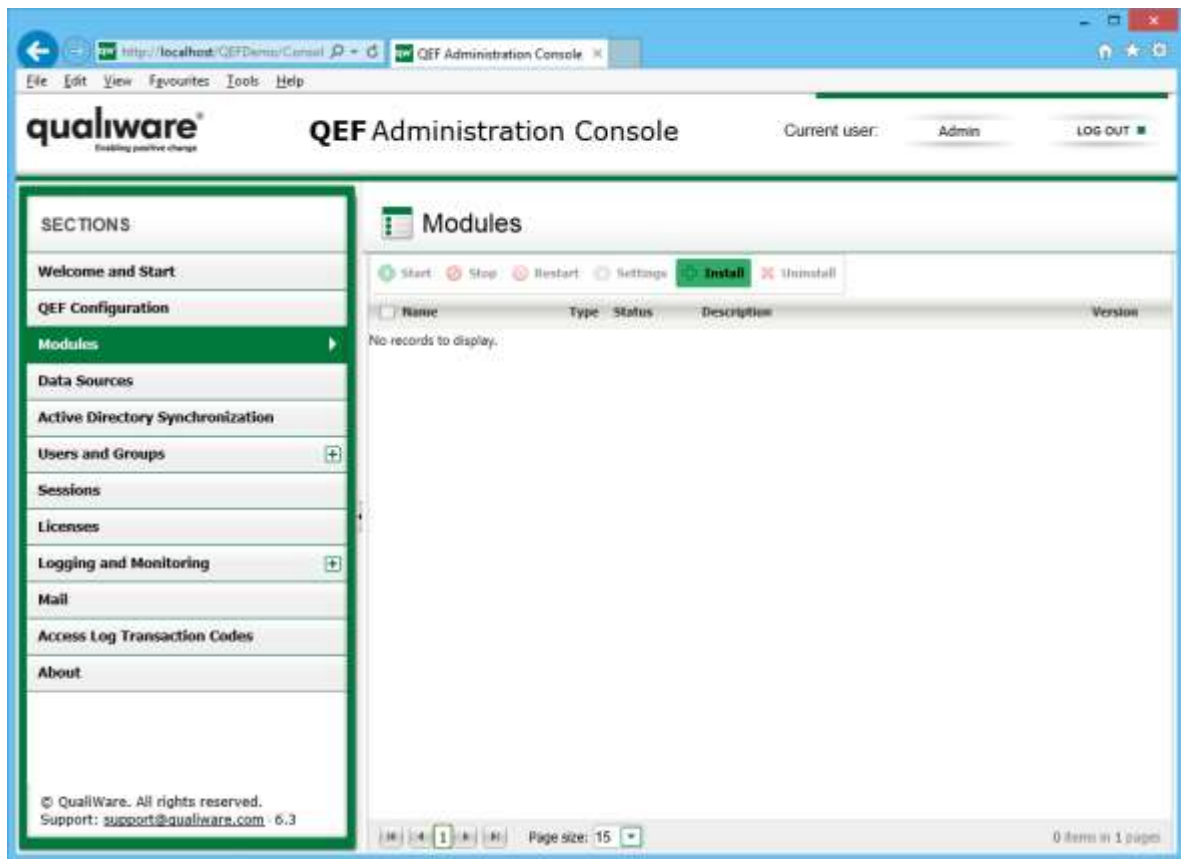
RA enables management of QIS repositories.

Web Forms enables access to repositories with objects through QIS from Web.

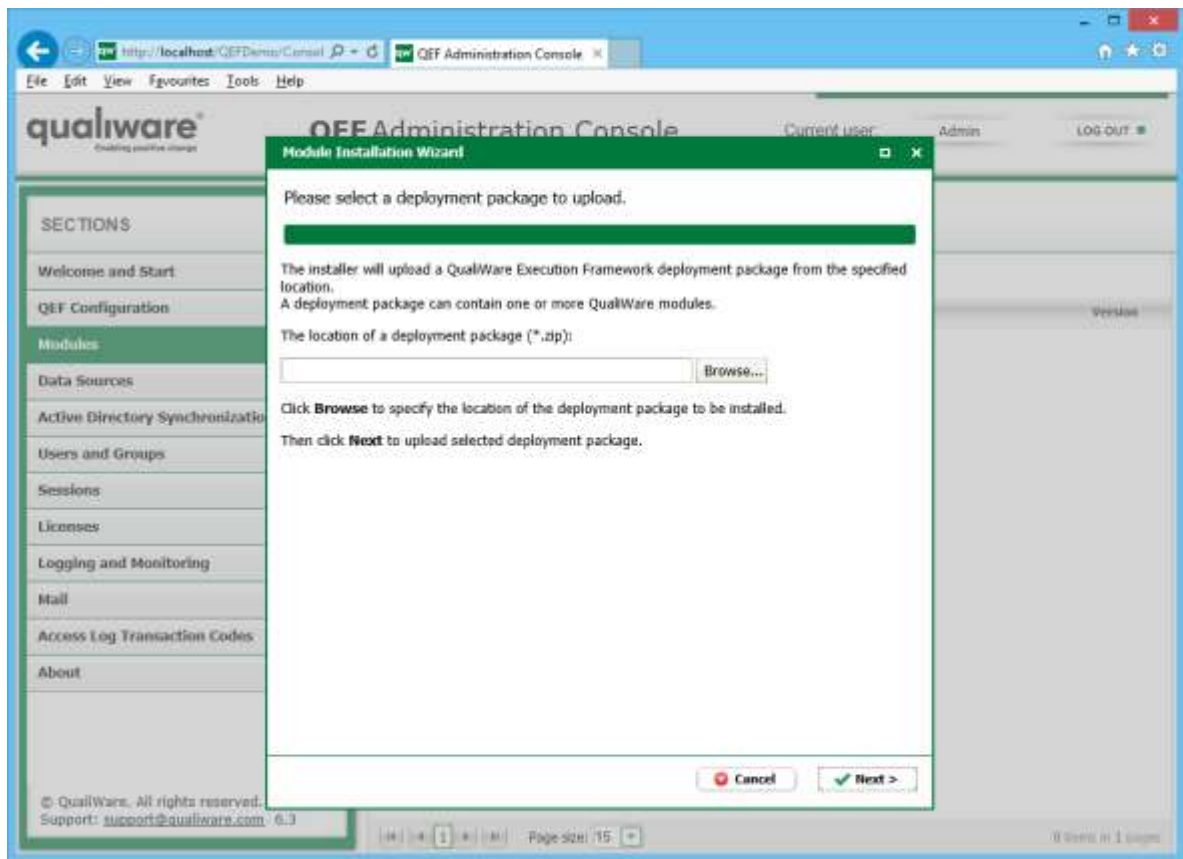
## 4 Installing and Updating QIS, RA and Web Forms Modules

Below are the steps to install and update modules:

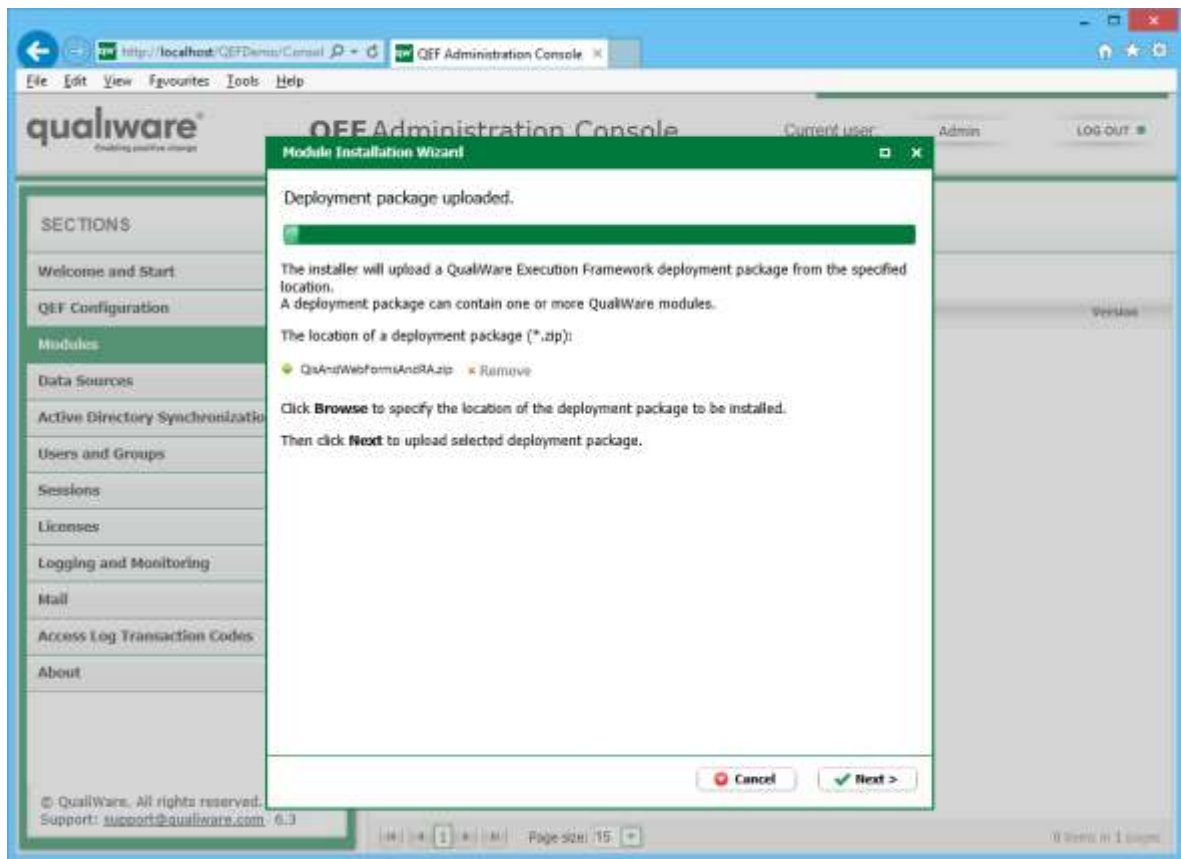
1. Open **Admin Console** -> **Modules**.
2. Click **Install**.



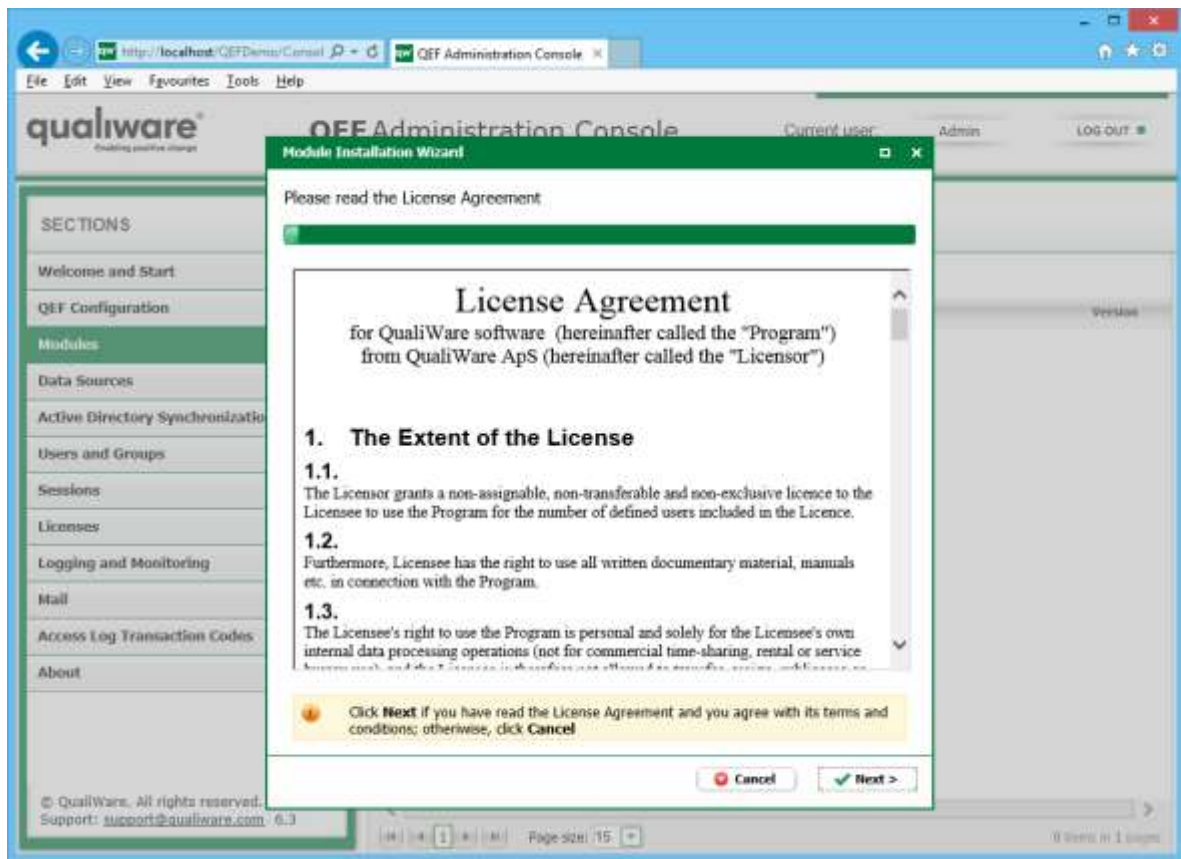
3. Click **Browse** and select modules deployment package (zip archive).



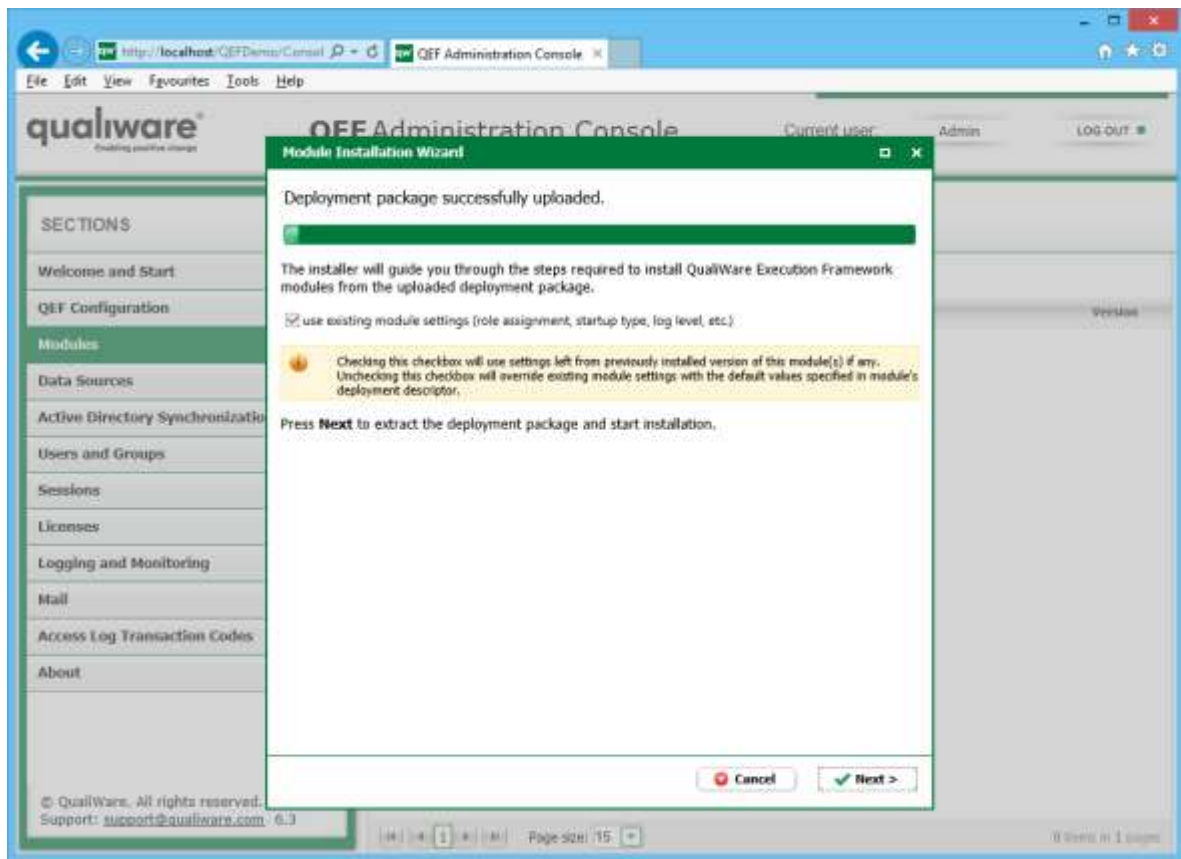
4. When deployment package is uploaded, click **Next**.



5. After reading the license agreement click **Next**.

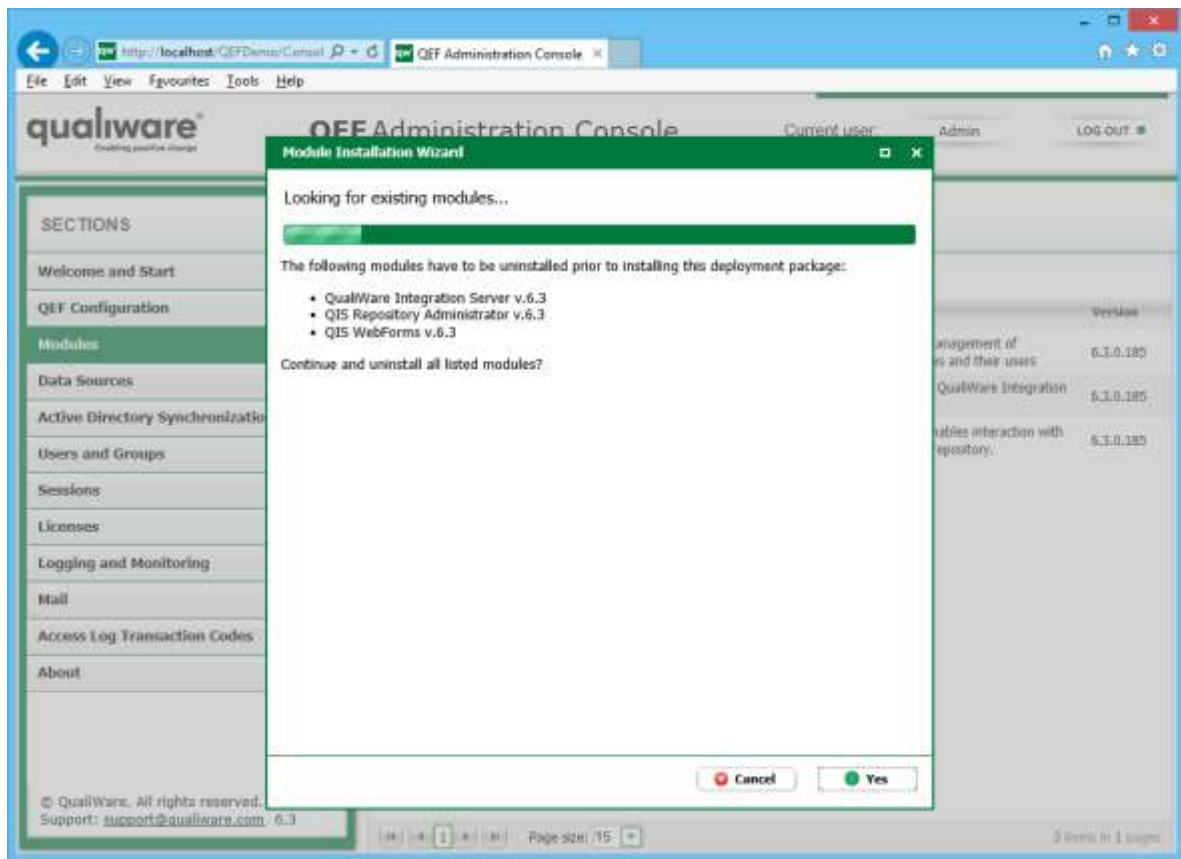


6. Enable or disable **use existing module settings**. Enabling it allows use of module settings from the previous installation. Click **Next**.

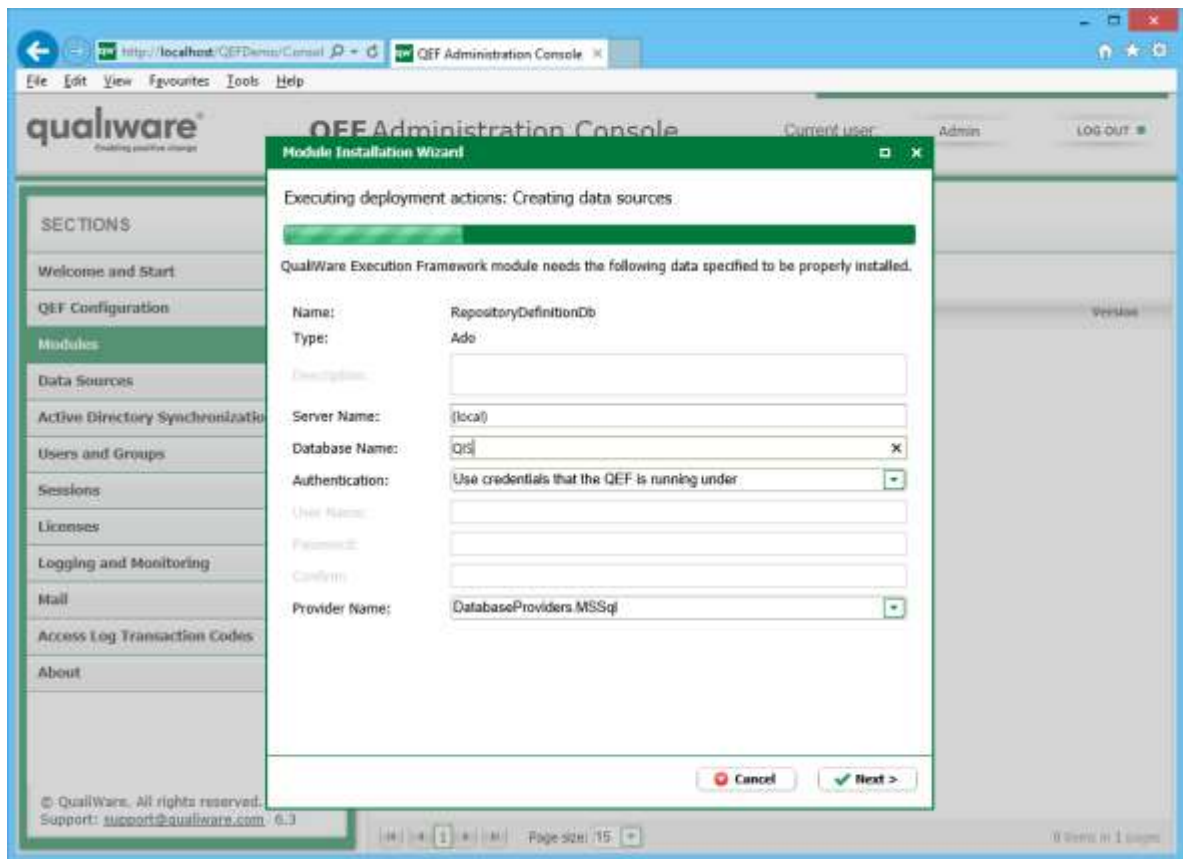


7. If it is an update, click **Yes** to confirm uninstall of previously installed modules.

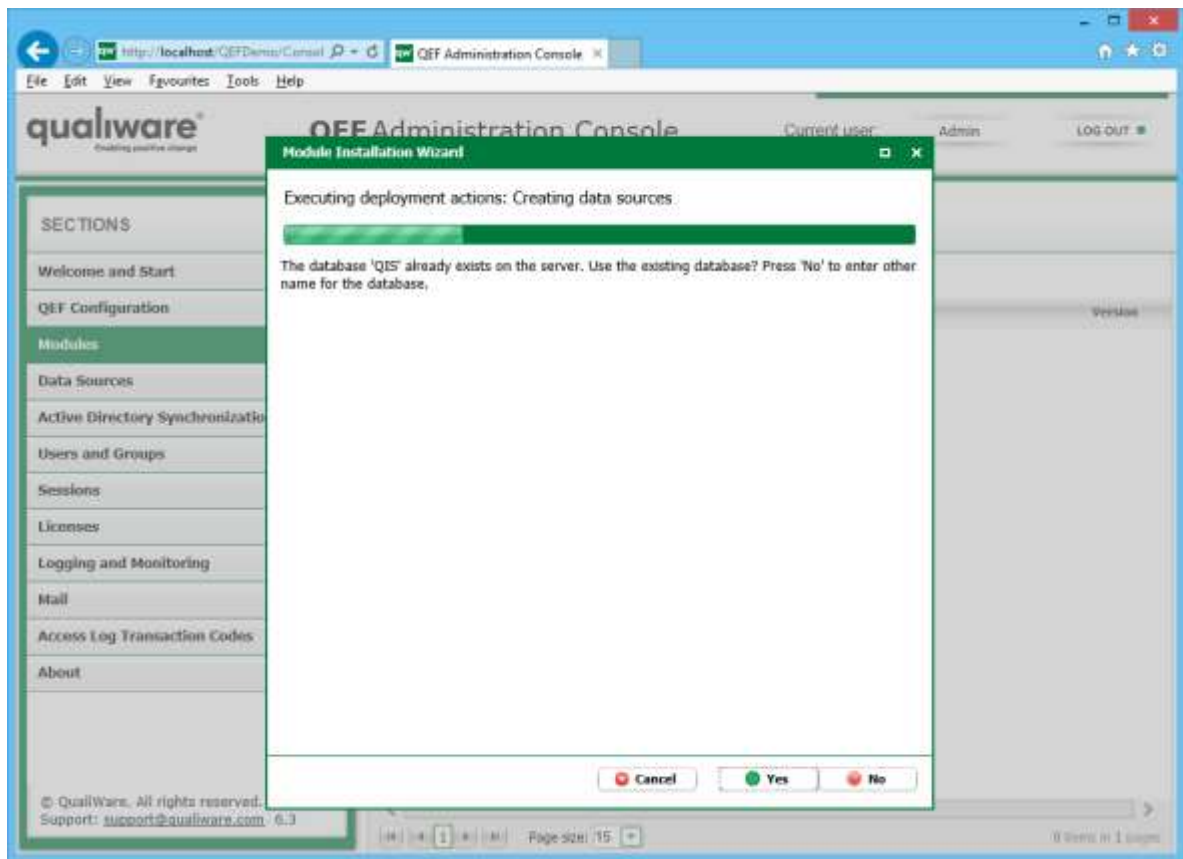




8. If it is a first-time installation or in step 6 **use existing module settings** was disabled, enter database settings and click **Next**.



9. If database already exists, press **Yes** to confirm install using existing database.



10. Review installation log and click **Close**. If installation fails, see QEF log for error details.

The screenshot shows the QualiWare QEF Administration Console interface. A 'Module Installation Wizard' dialog box is open in the center, displaying the following information:

**Installation completed successfully.**

**Message Log:**

- Info: Module e9c5b000-e32d-4b2f-8380-ce15be7f5cd7/6.3 has been installed.
- Info: Module ed09cd95-cee8-4835-960c-b5a33147a1f5/6.3 has been installed.
- Info: Module 5d42e272-83f2-4af0-8f18-02632258b0aa/6.3 has been installed.

**Summary:**

- QualiWare Integration Server 6.3 install
- QIS Repository Administrator 6.3 install
- QIS WebForms 6.3 install

The background interface includes a sidebar menu with sections like 'Welcome and Start', 'QEF Configuration', 'Modules', 'Data Sources', 'Active Directory Synchronization', 'Users and Groups', 'Sessions', 'Licenses', 'Logging and Monitoring', 'Mail', 'Access Log Transaction Codes', and 'About'. A table on the right side of the console lists installed modules and their versions:

Module Name	Version
Management of users and their users	6.3.0.185
QualiWare Integration	6.3.0.185
Tables interaction with repository.	6.3.0.185

At the bottom of the wizard window, there is a 'Close' button. The footer of the console shows '© QualiWare. All rights reserved. Support: support@qualiware.com 6.3' and 'Page size: 15'.