

# Enabling and configure GWE

# 1 Contents

1	Preface.....	2
2	Pre-Installation checklist .....	2
3	Installation of Governance Workflow Engine .....	2

# 1 Preface

This document describes installation of the standard solution **Governance Workflow Engine** (hereinafter, GWE).

## 2 Pre-Installation checklist

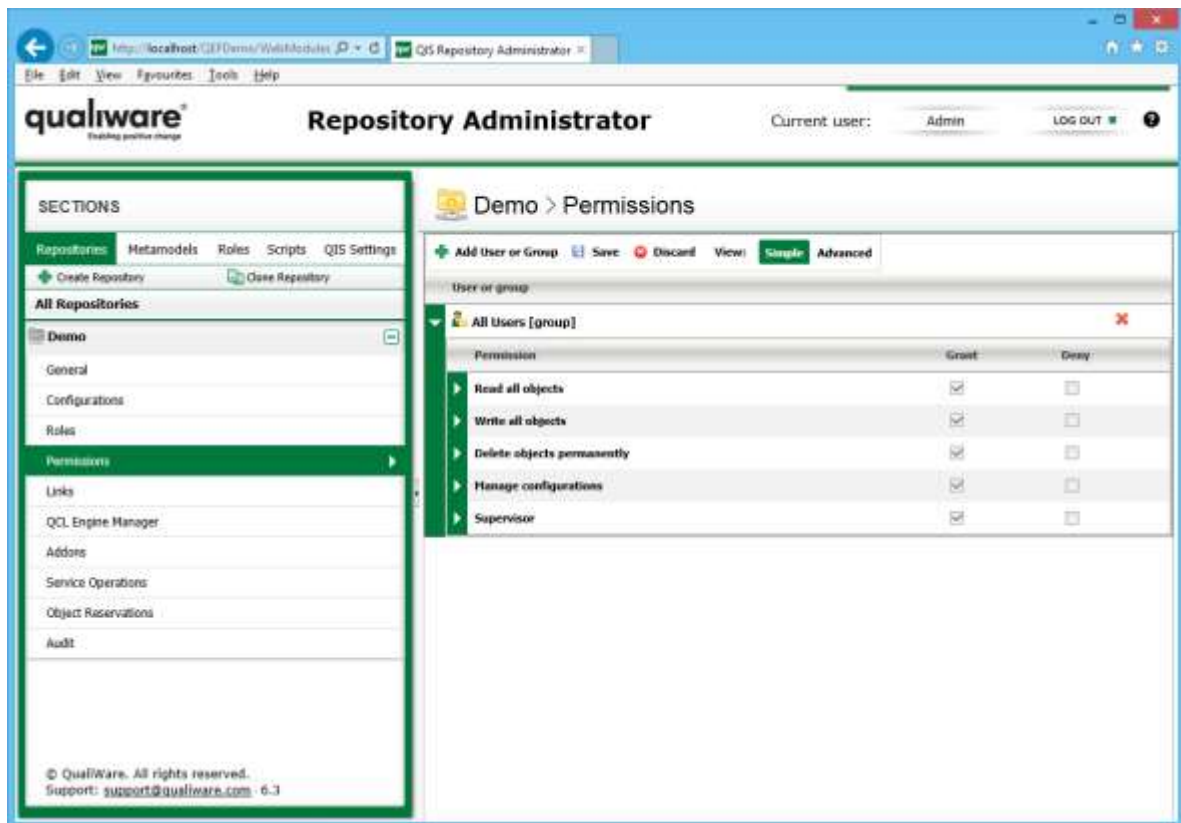
The document assumes the reader has installed QEF, QIS, Web Forms, RA and QLM.

Before GWE is installed, it is advised that repository is created and configured (see **Creation of repositories.docx** and **One time configuration of repositories.docx**) and QEP is installed (see **Publishing.docx**).

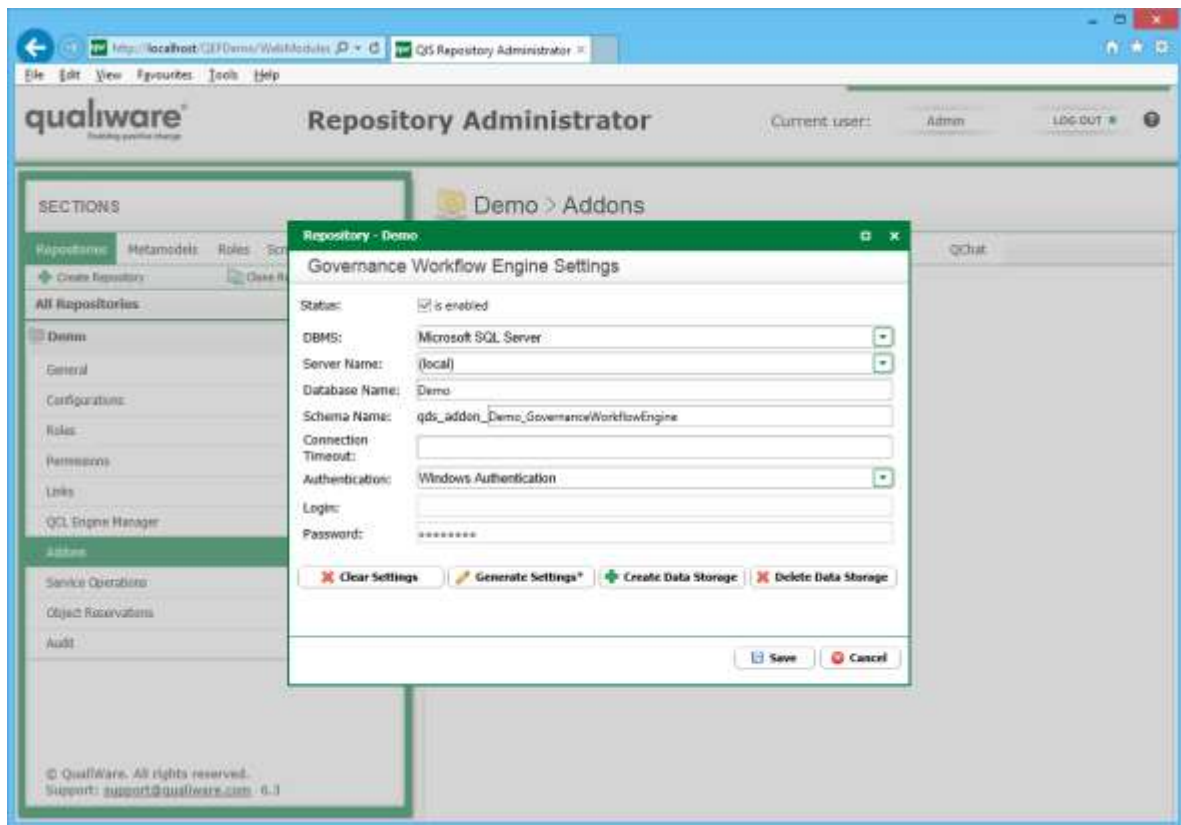
User account used to perform the installation must be QEF and QIS administrator.

## 3 Installation of Governance Workflow Engine

1. Go to **RA**.
2. Select existing repository or create a new one.
3. Go to the **Permissions** page.
4. Assign the **Supervisor** permission to user or group, which will be used to install the solution from QLM.



1. Go to the **Addons** page.
2. Select **Governance Workflow Engine**.
3. Click **Edit**.
4. Check **Status** so that it is enabled.
5. Click **Generate Settings** and then modify the settings according to the needs or enter all settings manually.



6. Click **Create Data Storage**.
7. Click **OK**.
8. Start **QLM** and connect to the repository with user from the step 4.
9. Click **Yes** when asked to import GWE objects.