

QualiWare Upgrade Guide from 6.6.x to 10.0.X



QualiWare ApS
Ryttermarken 15
DK-3520 Farum
Denmark

Tel: +45 4547 0700
Fax: +45 4547 0770

qualiware.com

Content

1. INTRODUCTION	2
2. CREATE A BACKUP	3
3. INSTALL NEW SOFTWARE VERSION	4
4. INSTALL THE NEW LICENSE	5
5. UPDATE THE DATABASE SCHEMA	7
6. UPDATE PUBLISHER AND GOVERNANCE FLOWS	9

1. Introduction

Upgrading a QualiWare installation is automatically guided by the QualiWare installation application and the QualiWare installation. This guide will provide a step by step upgrade guide with the following steps:

- Create backup
- Install the new QualiWare version on to of existing
- Update the license
- Update the database to latest schema
- Update the publisher and governance flows

2. Create a backup

All data in a QualiWare installation is stored in SQL server. Make sure the database is backed up before continuing. If any custom metamodels have been copied into the QLM/Models folder, please make sure to back those up as well.

3. Install new software version

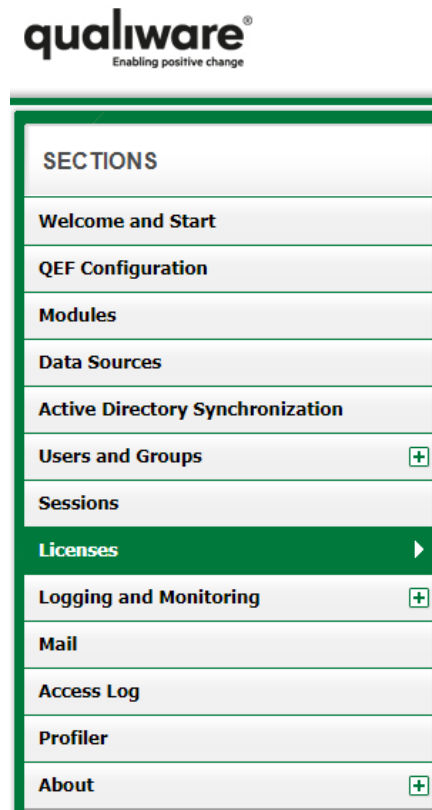
The QualiWare installation package will automatically pick up setting from an existing install. Please use the standard installation guide to install the

- QualiWare Execution Framework (QEFinstaller.msi)
- The QualiWare Integration Server bundle (qisbundle.zip)
- The QualiWare modeling tool (QLM.msi)

4. Install the new license

Please note: A new license is required when upgrading from 6.6 to 10.0. If the upgrade is from one 10.0.X to a newer 10.0.X then there is no need to update the license.

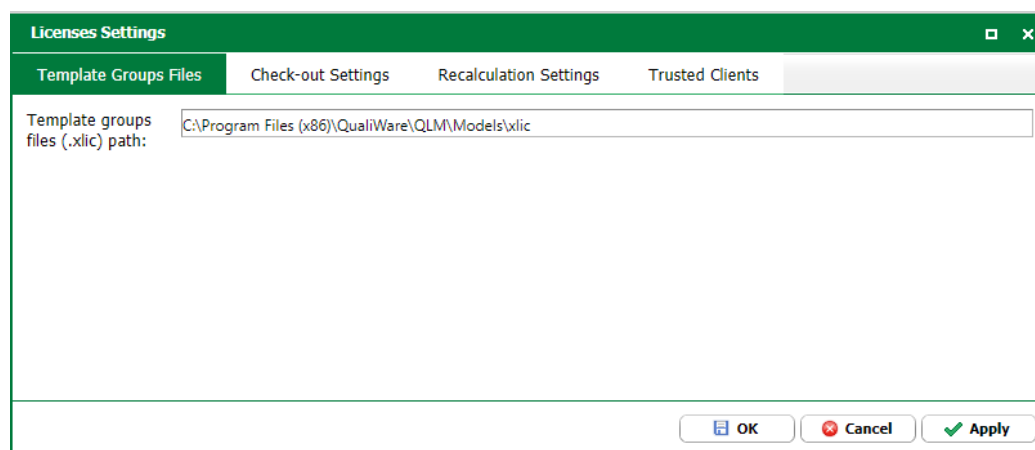
In the QEF console (<https://localhost/qef/console>), go to the "Licenses" menu on the left side:



In the center window, press the "Settings" button:



In the dialog, ensure that the file path is pointing to the xlic folder in the QualiWare installation:



Next, press the "Installation code" button. Copy the installation code and send to QualiWare or QualiWare partner to get an updated license.

License Installation code □ ×

PC:

Installation code:

✓ Please include the above installation code when requesting a license from your local QualiWare support.

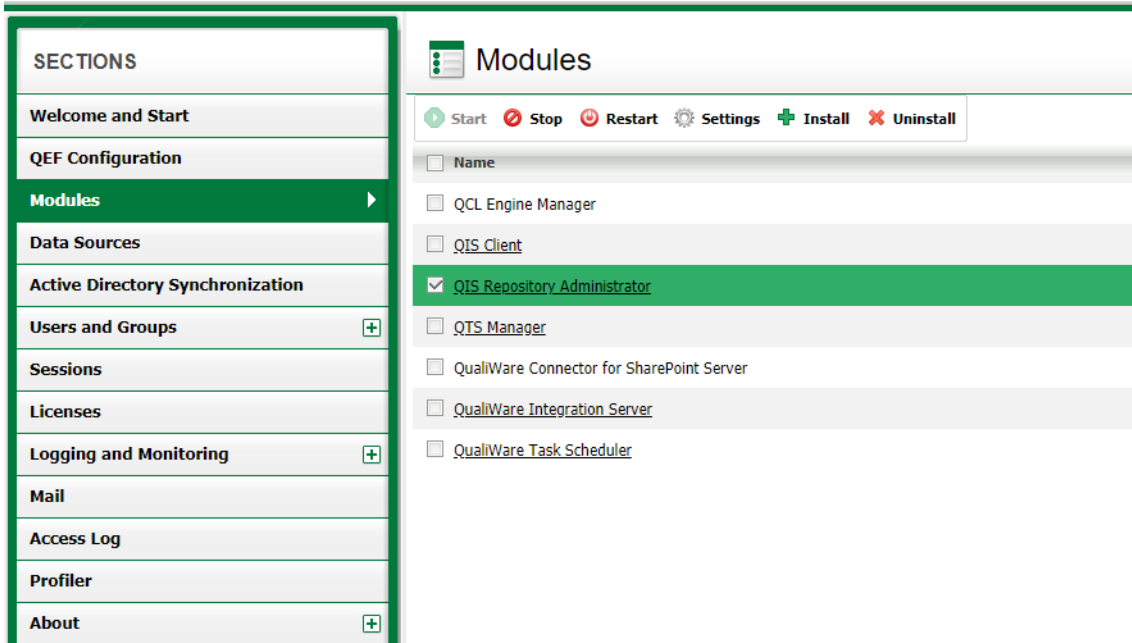
× Close

To install the license received from QualiWare or QualiWare partner select the "Install" in the menu and paste in the license string or select the file with the license.

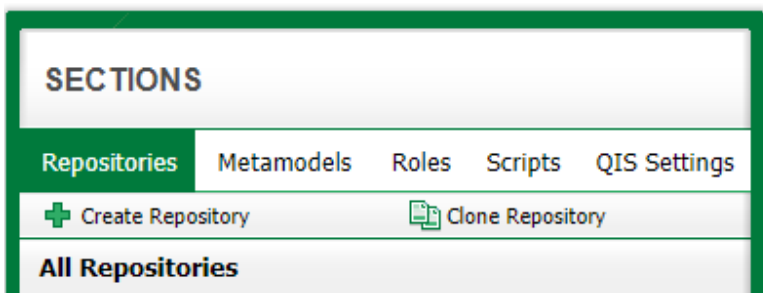
5. Update the database schema

With newer releases, QualiWare will often require an update to the database and database schemas.

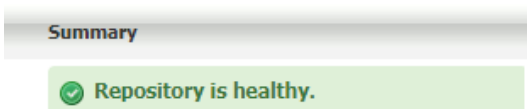
Open the QIS Repository Administrator found in the “Modules” menu on the left and then press the hyperlink to open:



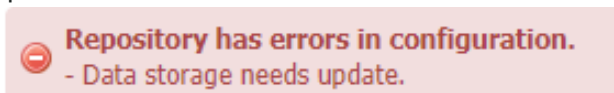
In the Repository Administrator click “All repositories”:



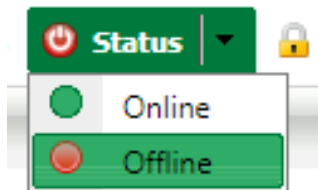
On the right, a full list of all repositories in the installation will show up. Each row representing each repository has a “Summary” column to the right. If the Summary says “Repository is healthy” then there is no need to do any further work here and you can continue to the next chapter.



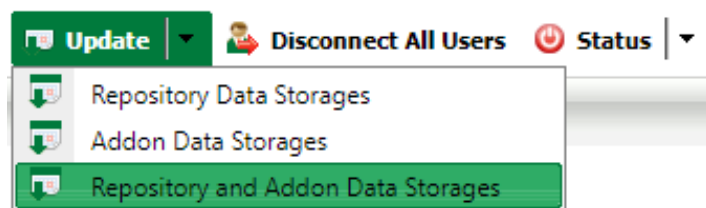
If the “Summary” column says “Data storage needs update” then the datastore must be updated.



To update the data storage you must first bring the repository offline. To do this, select the repository(s) in the list. Now bring the repository offline through the menu by selecting "Status" and press "offline":



Make sure the repositories are still selected and then select "Update" in the menu and press "Repository and Addon Data Storages":



Please note: Do not bring the repository online yet – they need to be offline for the next section. But do leave Repository Administrator open for the next section.

6. Update Publisher and Governance flows

The final stage in the update is to update the Publisher profile and Governance Workflows in each of the repositories.

To do this make sure the repository is offline (see previous section) and the QualiWare user has supervisor privileges in the repository.

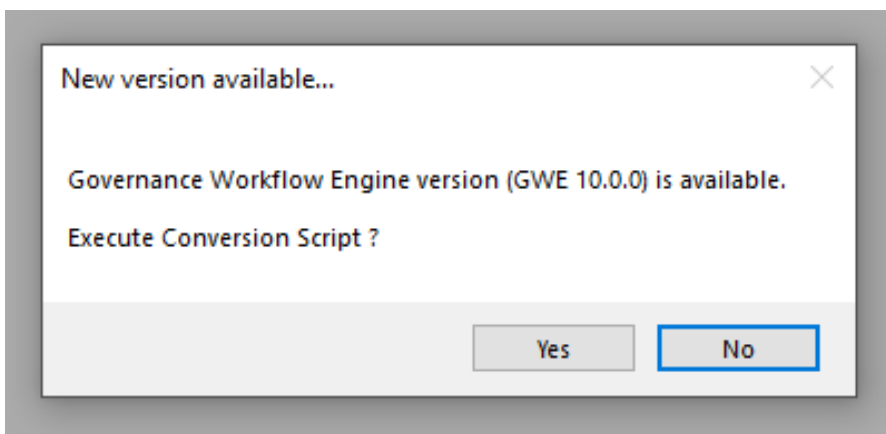
To set a user as supervisor select the repository in the left menu and select "Permissions":

Permission	Grant	Deny
Connect to repository	<input checked="" type="checkbox"/>	<input type="checkbox"/>
Read all objects	<input checked="" type="checkbox"/>	<input type="checkbox"/>
Write all objects	<input checked="" type="checkbox"/>	<input type="checkbox"/>
Delete objects permanently	<input checked="" type="checkbox"/>	<input type="checkbox"/>
Manage configurations	<input checked="" type="checkbox"/>	<input type="checkbox"/>
Supervisor	<input checked="" type="checkbox"/>	<input type="checkbox"/>

Make sure the "Supervisor" is checked.

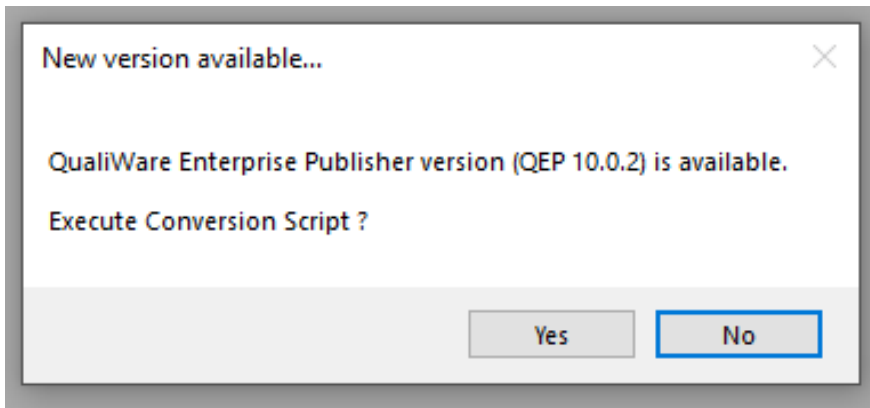
For this part it is important these tasks are done directly on the server where QualiWare is installed and the windows user must have write access to program files in windows.

Start QualiWare and login with the user defined as supervisor. Select the repository you wish to update. When QualiWare starts it will detect if there are Governance Flows defined from a previous version of QualiWare. If found, you will be prompted to update the flows:



Press yes to do the conversion.

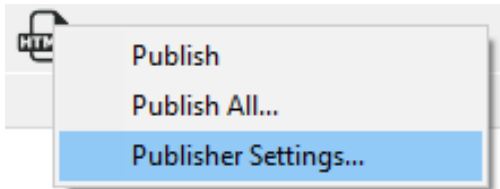
After the Governance Flows have been updated, QualiWare will check the Publisher profile. If a previous version is found the user will be prompted to update the publisher:



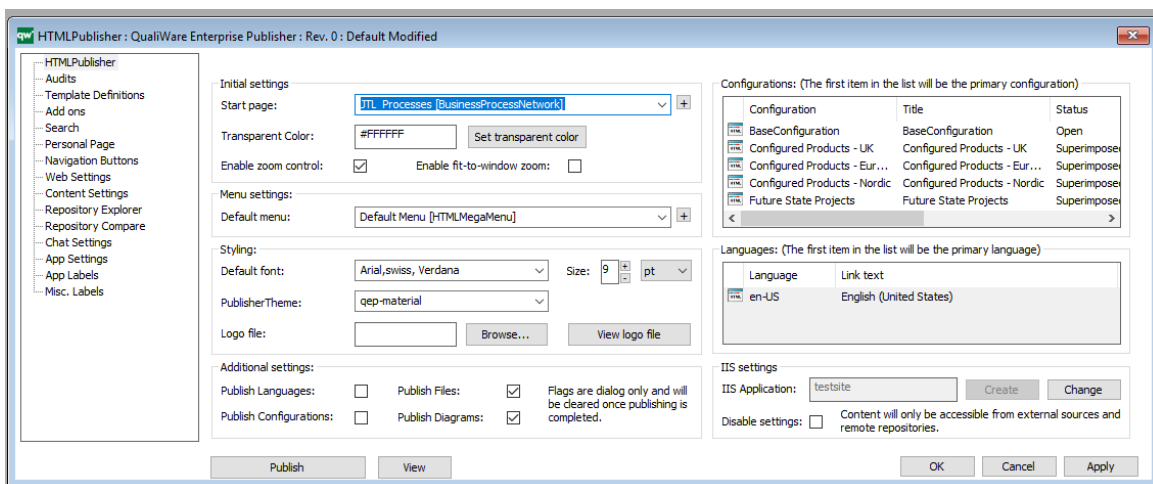
The final task is to update the published site. In the top menu in QualiWare select the HTML icon:



And then select the "Publisher settings...":



In the Publisher dialog check the "Publish Files:" and "Publish Diagrams:" and then press Publish.



In the popup select Diagrams and then select all diagrams. The publisher will now do a fresh publish of the repository.

Repeat this for all repositories.