

Guide to License Sharing



Contents

1	About This Document	4
2	Business background	4
3	License Server	4

Change log

Date	Change
11-09-2022	Version 1 of this document

Figure list

Figure 1: Example of a multi-server environment	4
Figure 2: License settings in the QEF console	5
Figure 3: Add Trusted Clients - License settings	5
Figure 4: Edit licens	6
Figure 5: Add trusted client to license	6
Figure 6: Choose the installation code and click Add	7
Figure 7: Trusted client is linked to a license	7
Figure 8: Copy the net.tcp URI from the QEF configuration	8
Figure 9: Licenses - select Configure	8
Figure 10: Add License server	8
Figure 11: Enter/paste the URI from Figure 8 and enter username and password	9
Figure 12: Trusted connection	9
Figure 13: "Not found" status on connection	9
Figure 14: New tab "QW License Server"	10
Figure 15: License holders view	10

1 About This Document

This guide defines the steps to enable a trust between a QualiWare QEF License Client and a License Server as to enable license sharing. A shared license allows for one user to use the same license across multiple QualiWare installations on the same network.

2 Business background

In a single QualiWare installation, a user can log into the same installation with multiple devices and applications and only taking up one license. Each combination of device and application takes up one session and each license can hold up to 5 sessions.

Starting with QualiWare 10.5, a licence-sharing mechanism has been introduced that allows sharing of sessions among installations. This means that one user can have up to 5 sessions per license now shared across installations.

Here is an illustration of a multi-server environment where licenses are shared:

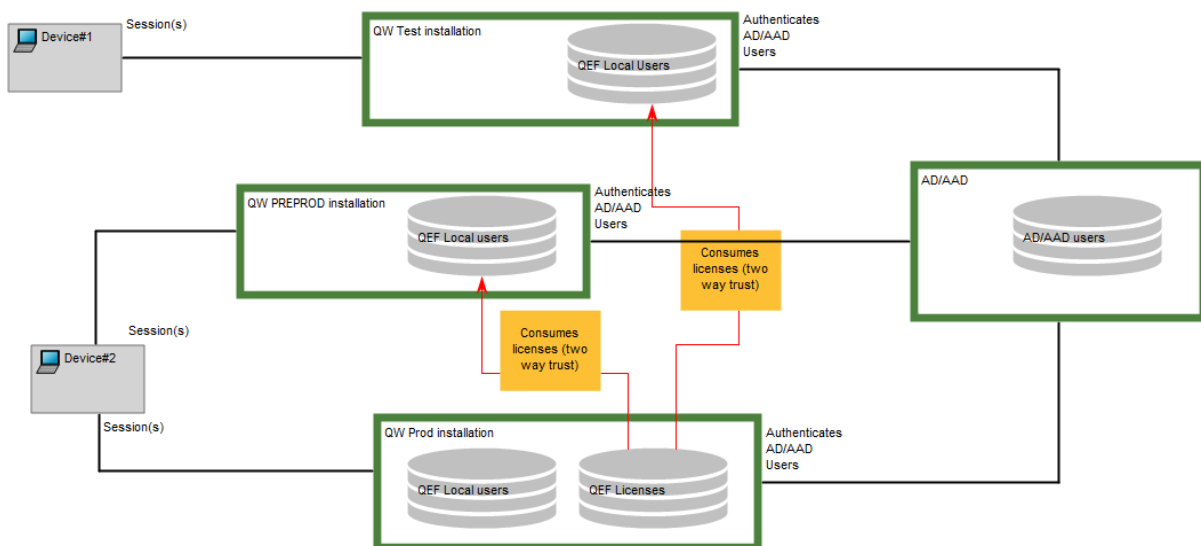


Figure 1: Example of a multi-server environment

The example illustrates two devices having several sessions to various installations. One user is identified by one user from AD or AAD. A local user (e.g. QualiWare Admin) is local and the license cannot be shared. If the person is logged in as an AD user, then the user counts are ONE, and by that the person can be locked into several installations from several devices and applications taking up only one license.

The prerequisite for this is that the licenses are installed in one installation and made available for other installations by establish a trust between them.

3 License Server

The first step is to obtain the QualiWare installation code of the QualiWare Client (QEF Console > Licenses > Installation Code) that will be using the license.

Once the code is obtained, go to the QEF Console of the License Server.

Go to the Licenses tab (1), click on Settings (2), click on the Trusted Clients tab (3), and click on Add (4):

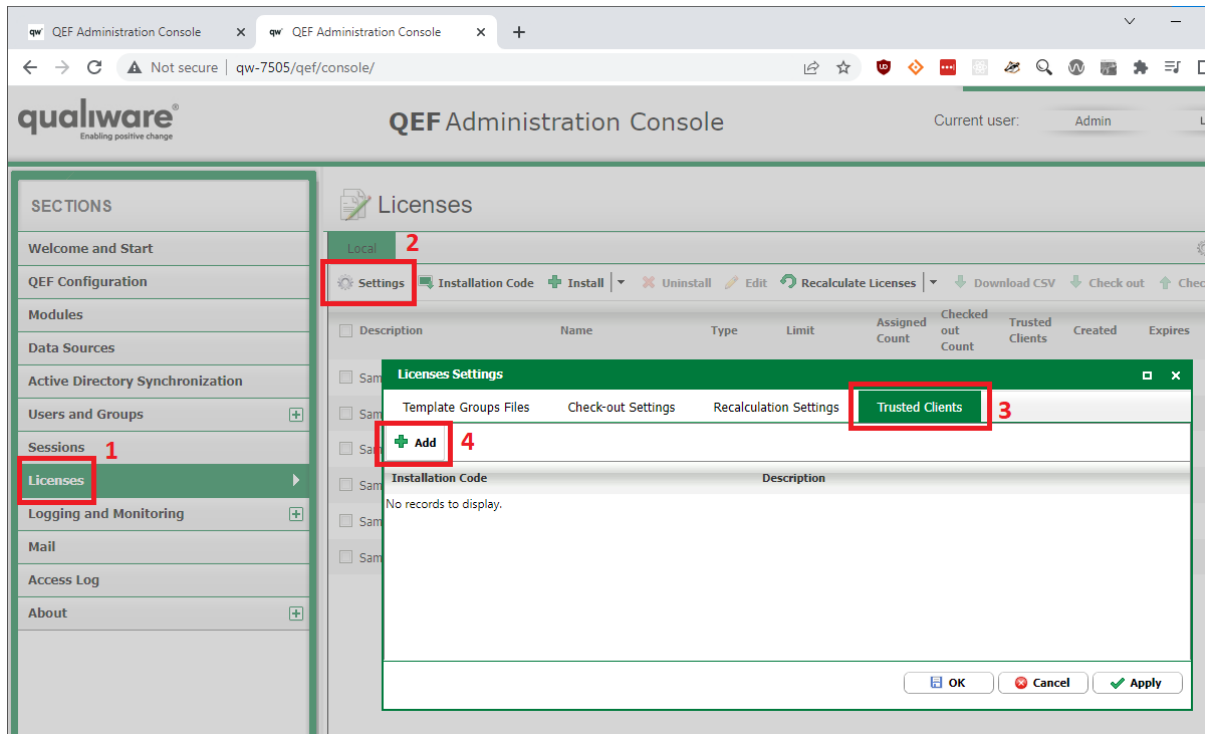


Figure 2: License settings in the QEF console

In the installation code field, enter the client's Installation Code (1), enter a Description (2) and then click on Add (3):

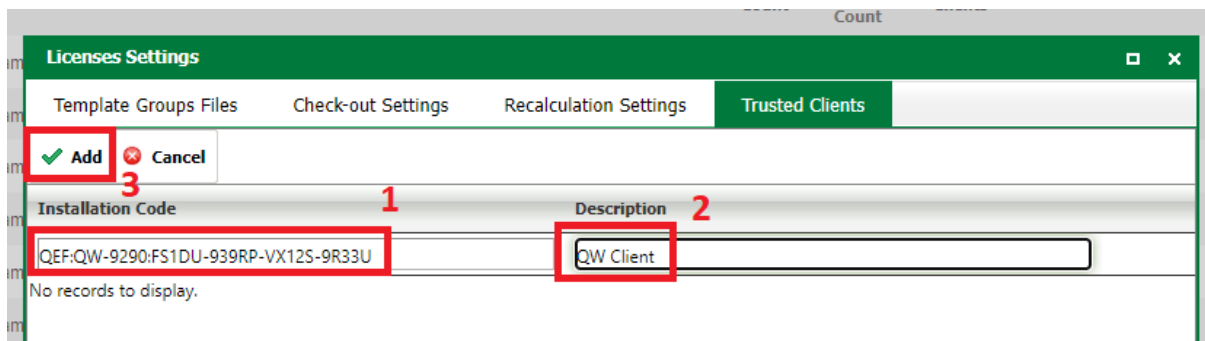


Figure 3: Add Trusted Clients - License settings

The client is now trusted by the server to establish a connection.

Still on the License Server, in QEF Console, in the Licenses tab (1) screen, choose a license (2) that you would like to share and click on Edit (3):

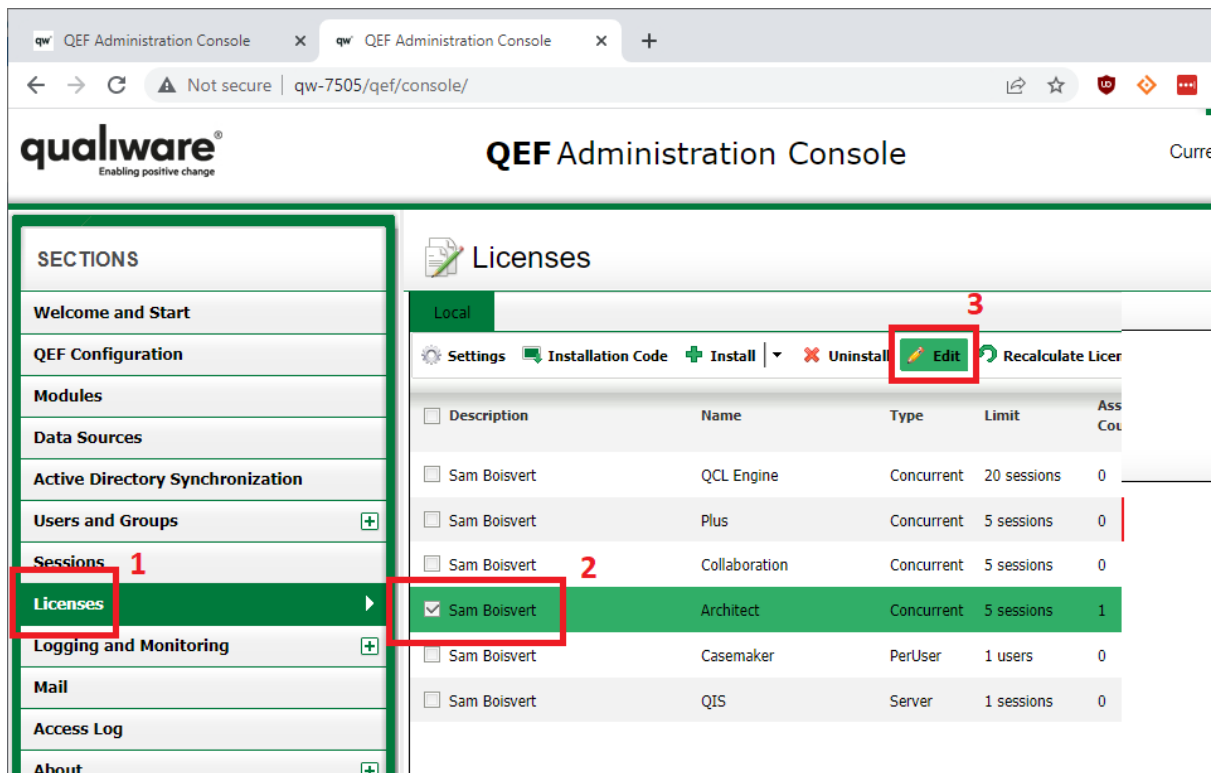


Figure 4: Edit license

Go to the Trusted Clients tab (1) and click on Add (2):

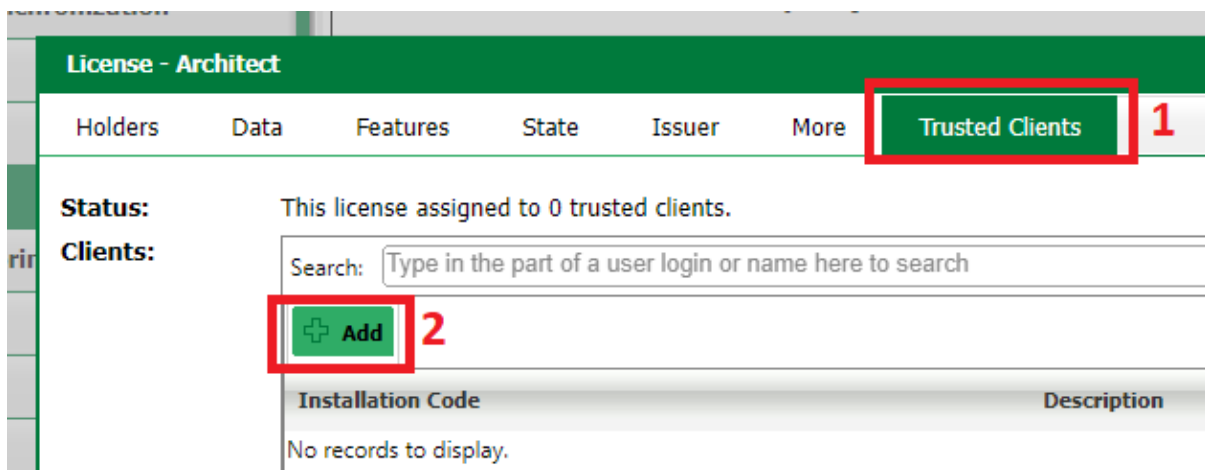


Figure 5: Add trusted client to license

Click in the installation code box, and it will automatically propose the trusted client that was set in the previous steps. Choose the installation code and click on Add:

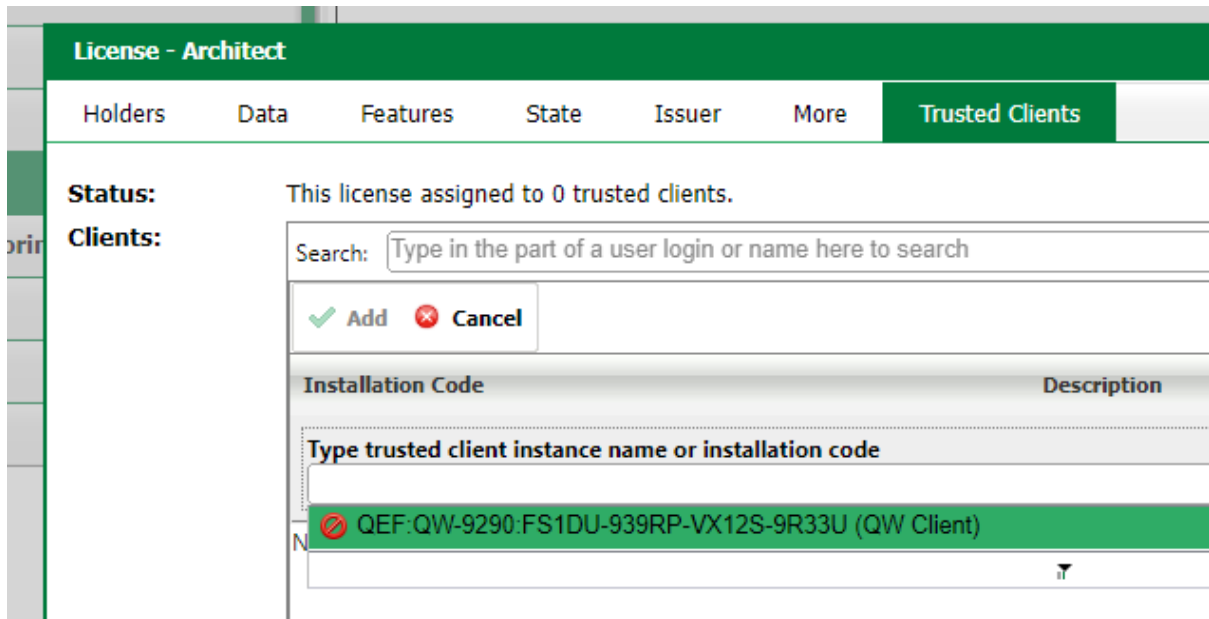


Figure 6: Choose the installation code and click Add

You should now see the client as a Trusted Client for this license:

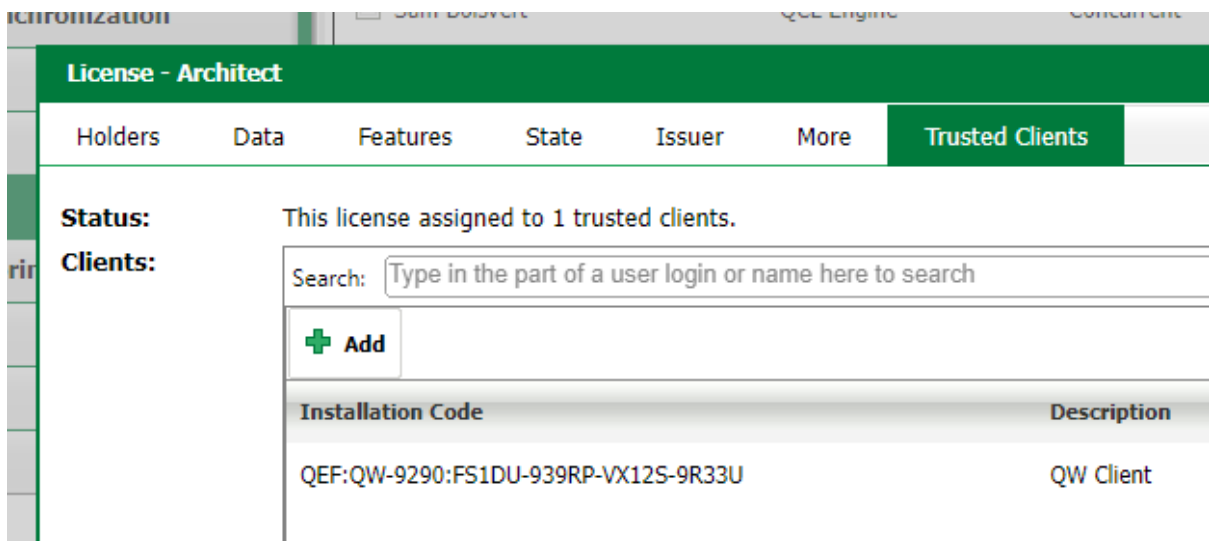


Figure 7: Trusted client is linked to a license

Still on the license server, go to the QEF Configurations tab and copy the net.tcp URI:

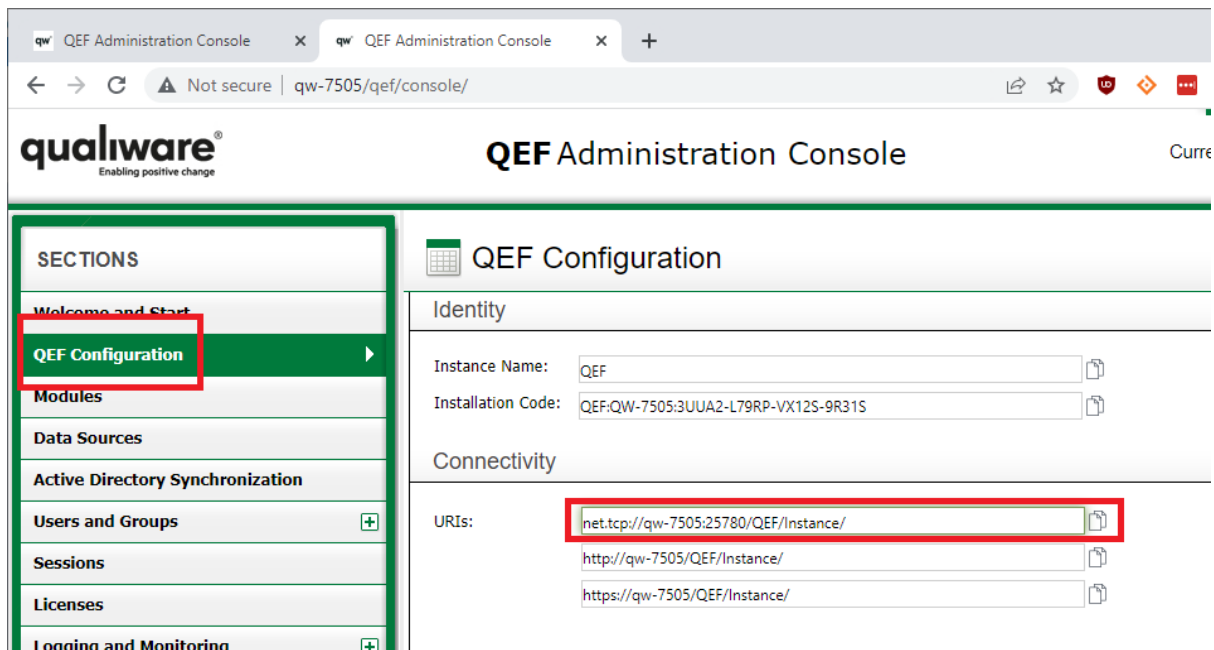


Figure 8: Copy the net.tcp URI from the QEF configuration

Go to the QEF Console of the client, and click on the Configure button in the top-right corner:

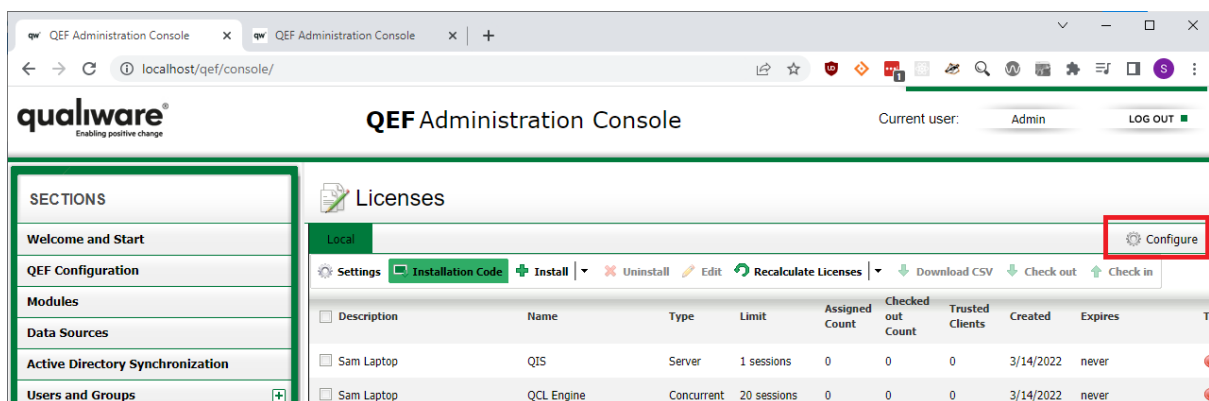


Figure 9: Licenses - select Configure

Click on Add:

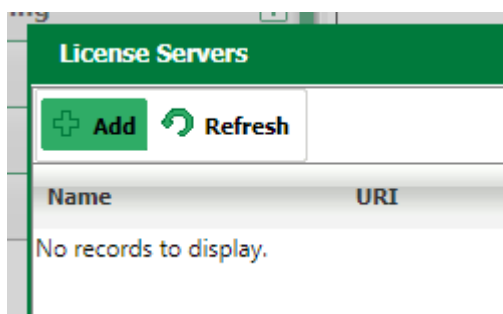


Figure 10: Add License server

Enter the Name, URI of the server, and a username and password for an account that has proper license privileges:

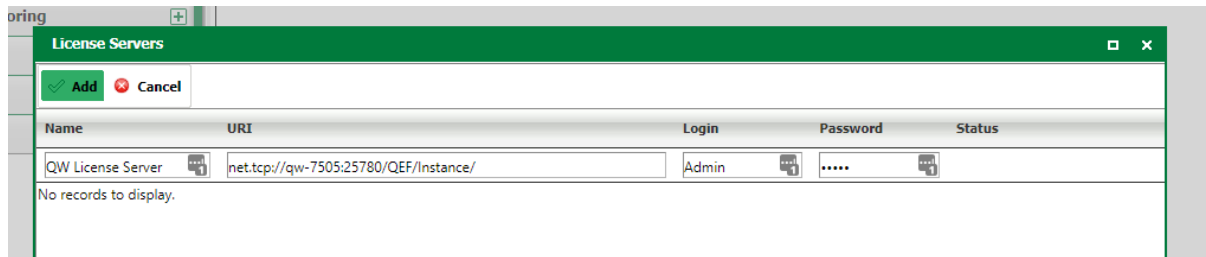


Figure 11: Enter/paste the URI from Figure 8 and enter username and password

NOTE: The user account that is used must be local to the license server and must have “License Server Administrator” server role.

You should now see a Trusted connection to the server:

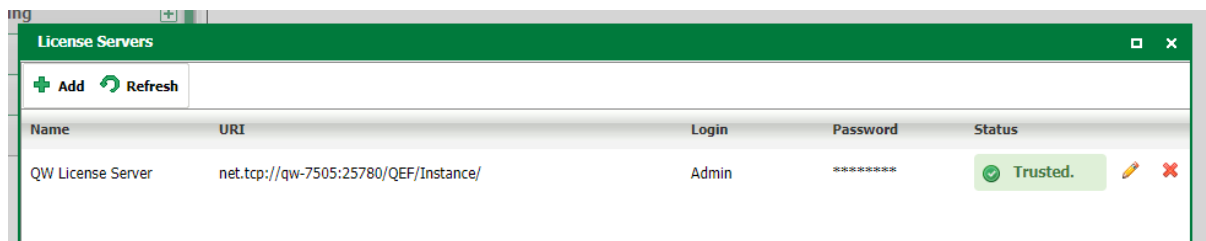


Figure 12: Trusted connection

TROUBLESHOOTING If you see this “Not found” message:

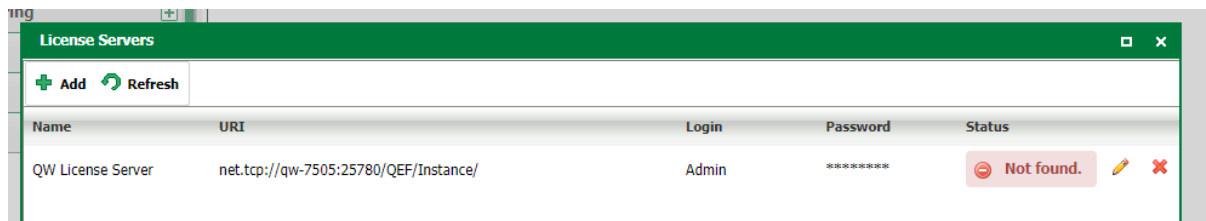


Figure 13: "Not found" status on connection

It is probably firewall rules preventing a communication to that client on that defined port.

In the Licenses tab, you should now see Local and a new License Server tab, where you can assign the licenses from the license server:

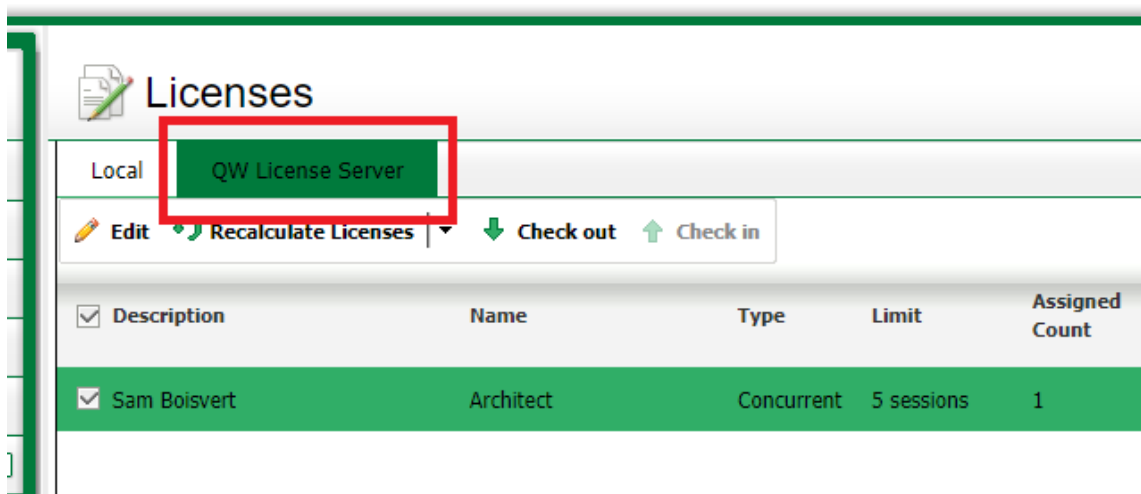


Figure 14: New tab "QW License Server"

When assigning a license, only users local to the server are visible. In the scenario below, on both the license server and the license client, we assigned an Architect license to the built-in Admin user.

As mentioned before, local users will still need to be assigned a license per environment, and single-sign-on (AD or AAD) users only need to be assigned a license once.

The tab shows us the source of the account that is holding the license, where "Local" is always the user from the current server that you are connected to:

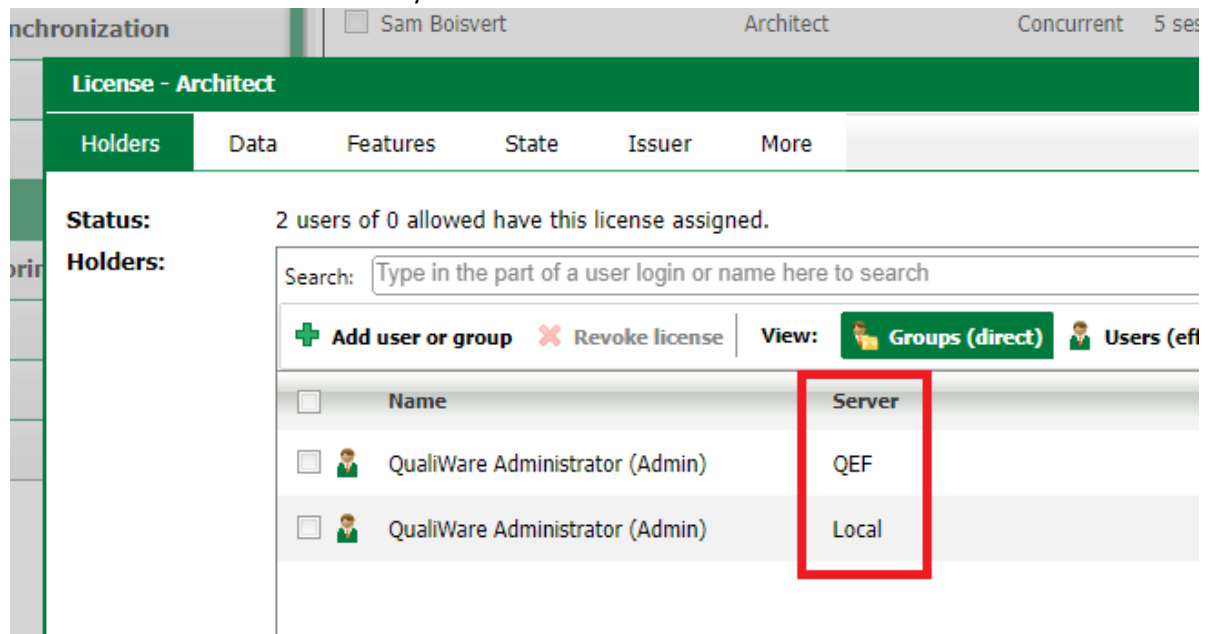


Figure 15: License holders view